



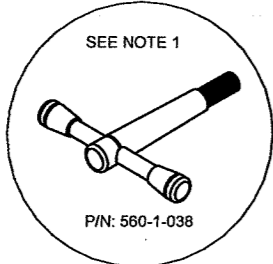
REMOVAL & INSTALLATION OF THE SLIDE CASTING ASSEMBLY

1. This operation is performed easier when the seat has been removed from the pedestal, had its backrest folded forward and then flipped, resting the seat on the backrest. Some padding should be put down on the workbench to prevent the backrest from being marred.
 - a. In order to fold the backrest forward, first remove the Recline Lock Handles by simply unscrewing them.
 - b. Pry the clip on each backrest gas spring off the ball stud on the seat pan. See the diagram attached.
 - c. Remove the seat from the pedestal and place on padding at work bench.
2. Unscrew the Allen head screws at rear of seat.
3. Lift Slide Casting Assembly from seat.
4. Be sure all bushings are in place on stainless slide rods. Push the Slide Casting Assembly into position. A gentle tap with a wooden or plastic hammer at the back end of the slide rods will insure the bushings at the front have seated properly.
5. Secure the Assembly with the allen screws. Do NOT Tighten.
6. You'll notice one hole is round and the other oval. The oval hole allows for some adjustment. Move the Casting back and forth a few times and then tighten the screw in the round hole. Move the Assembly fore and aft until it moves easily while slowly tightening the second screw. Once satisfied with the fore/aft motion of the Assembly, fully tighten the second screw. Striking the Slide Rod on the adjustment side with a Dead-Blow Hammer will help you find the position that allows the Assembly to move most freely.
7. NOTE: Loc-tite (Red) in the threaded end of the slide rod will prevent your adjustment from shifting once the seat is back in use.
8. Return the seat to the pedestal and install. Push the gas spring back onto the ball stud and insert the Recline Lock Handles. Check the fore/aft operation of the seat. If satisfied with the movement, install the anti-removal bolt (5/16'-18x2" Socket Head cap screw) into the casting.

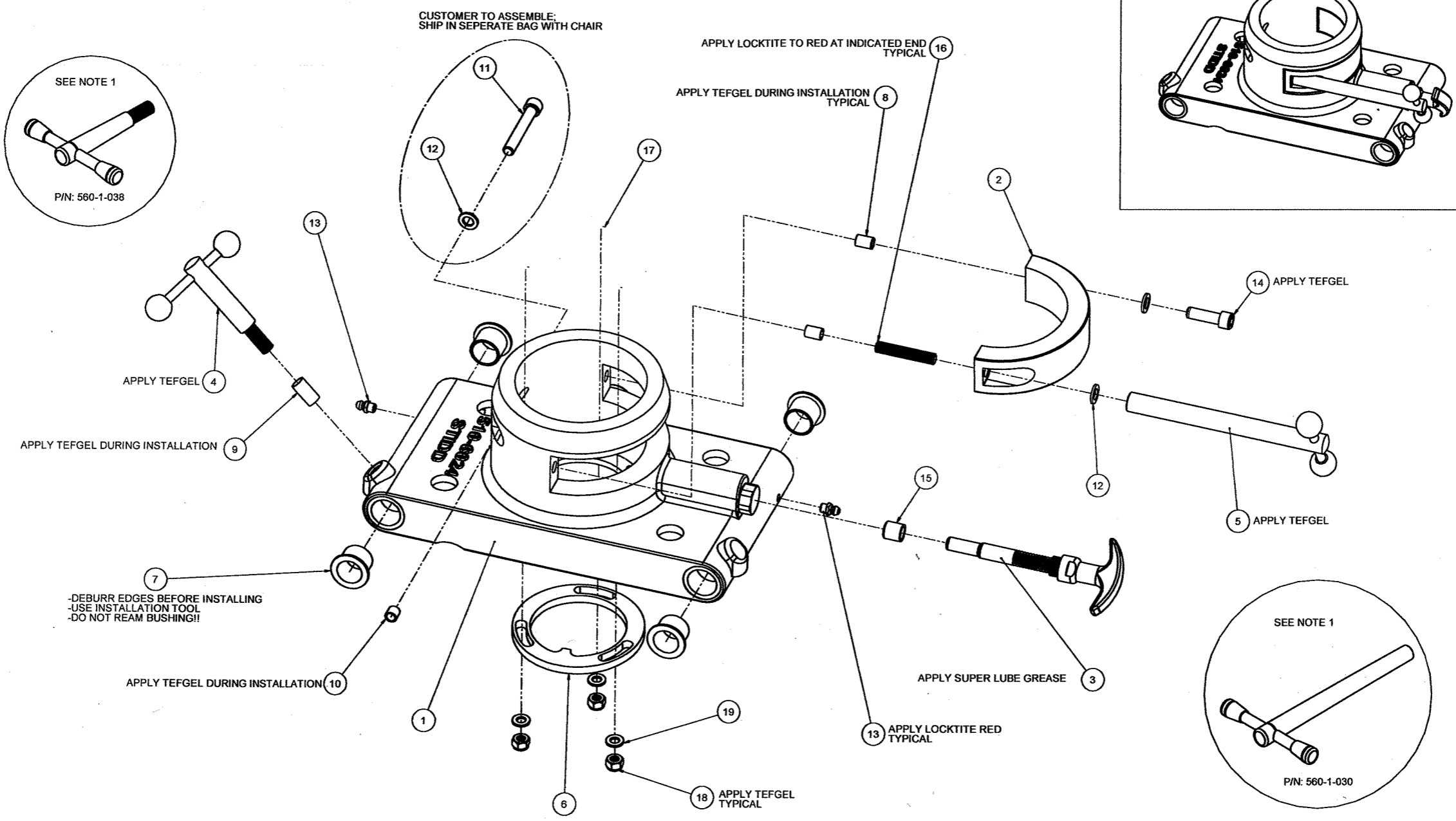
If you have any questions about this operation, please contact me immediately.
Jac Citera – Customer Service, 631 477-2400, ext. 135

PROPRIETARY DATA	8	7	6	5	4	3	2	1
------------------	---	---	---	---	---	---	---	---

All information contained in this document is property of STIDD Systems, Inc. and shall not be released, performed, displayed, duplicated, used, or disclosed, in whole or in part, for any purpose other than to evaluate a product of STIDD Systems, Inc. No rights are conveyed to the recipient or any other party to use any intellectual property contained in this document in any manner. All recipients shall protect all information in this document as prescribed by DFARS 252.227-7016. The information subject to this restriction is contained in every page of this document.



CUSTOMER TO ASSEMBLE:
SHIP IN SEPERATE BAG WITH CHAIR



NOTES:
1. REPLACE ITEMS 4 & 5 WITH STIDD P/N: 560-1-038 AND 560-1-030 RESPECTIVELY IN ALL CHROME CHAIRS

SIZE D	CAGE CODE 0W5E3	DWG No. 510-1-020-AR	REV -
DO NOT SCALE DRAWING, WORK FROM DIMENSIONS		SCALE:3:4	SHEET 2 OF 7