



## OPERATIONS AND MAINTENANCE MANUAL

# 2100-101U FLIP SEAT, USCG RB-M

Description, Operation, Maintenance and  
Illustrated System Breakdown



**INTRODUCTION** 1

**GENERAL  
INFORMATION** 2

**INSTALLATION** 3

**SEAT ADJUSTMENT** 4

**PREVENTATIVE  
MAINTENANCE** 5

**TECHNICAL  
DOCUMENTATION** 6

**WARRANTY** 7

**\*\*UNCLASSIFIED\*\***

### **PROPRIETARY & BUSINESS SENSITIVE INFORMATION**

All information contained in this document is the property of STIDD Systems, Inc. and shall not be released, performed, displayed, duplicated, used or disclosed, in whole or in part, within or outside the U.S. Government for any purpose other than to evaluate a document from STIDD Systems, Inc. No rights are conveyed to the Government or any other party to use any intellectual property contained in this document in any manner. The Government shall protect all information in this document as proscribed by DFARS 252,227-7016.

## **CHAPTER 1 INTRODUCTION**

### **SECTION 1.1. TABLE OF CONTENTS**

<b>Table of Contents</b>	<b>Page Number</b>
<b>Chapter 1 INTRODUCTION</b>	
Section 1.1	TABLE OF CONTENTS_____1
Section 1.2	LIST OF ILLUSTRATIONS_____2
Section 1.3	RECORD OF CHANGES_____3
<b>Chapter 2 GENERAL INFORMATION</b>	
Section 2.1	TAKING DELIVERY_____4
Section 2.2	UNPACKING THE SEAT_____4
<b>Chapter 3 INSTALLATION</b>	
Section 3.1	PREFACE_____5
Section 3.2	MOUNTING_____5
Section 3.3	TENSION MEMBER REPLACEMENT_____6
Section 3.4	SEAT BELT REPLACEMENT_____7
Section 3.5	HANDLE REPLACEMENT_____8
<b>Chapter 4 SEAT ADJUSTMENT</b>	
Section 4.1	PREFACE_____9
<b>Chapter 5 PREVENTATIVE MAINTENANCE</b>	
Section 5.1	GENERAL CARE_____9
<b>Chapter 6 TECHNICAL DOCUMENTATION</b>	
Section 6.1	PARTS PRICE LIST_____9
Section 6.2	GENERAL DIMENSIONS_____10
Section 6.3	PPL EXPLODED_____11
<b>Chapter 7 WARRANTY</b>	
Section 8.1	LIMITED WARRANTY_____12

## SECTION 1.2

### LIST OF TABLES AND ILLUSTRATIONS

#### Chapter 2 GENERAL INFORMATION

Table 1-1	Included Parts_____	4
-----------	---------------------	---

#### Chapter 3 INSTALLATION

Figure 3-1	Mounting Hole Location_____	5
Figure 3-2	Tension Member Replacement_____	6
Figure 3-3	Seat Belt Replacement _____	7
Figure 3-4	2100 Handle Replacement_____	8

#### Chapter 6 TECHNICAL DOCUMENTATION

Table 6-1	Parts List_____	9
Figure 6-2	General Seat Dimensions_____	10
Figure 7-3	PPL Exploded_____	11

### SECTION 1.3.

## RECORD OF CHANGES

[illegible]

## CHAPTER 2

### GENERAL INFORMATION AND PACKAGE INSPECTION

#### 2.1 TAKING DELIVERY

Upon taking receipt of your STIDD seat, visually inspect packaging for any signs of damage. It is important to note that while your seat is packed to withstand the rigors of normal shipment, damage to the product during shipping can occur. Any damage must be immediately reported to the shipping carrier, and the original packaging materials must be saved for inspection for evidence of damage in transit.

It is important to note that your 2100-101U seat has been packaged in a single box. The seat comes fully assembled, ready for mounting. Mounting and installation of replacement part kits is covered in Chapter 3 of this manual.

#### 2.2 UNPACKING THE SEAT

Carefully remove the packaging materials from the seat. Exercise caution and DO NOT USE A KNIFE while opening the package or damage to the seat could result. Table 1-1 provides a list of parts and hardware included with your seat.

**Table 1-1. Included Parts**

<b>Box #1</b>		
<b>Description</b>	<b>Quantity</b>	<b>Used In</b>
<b>2100-100U Seat Assembly</b>	<b>1</b>	

## CHAPTER 3

### INSTALLATION

#### 3.1 PREFACE

There is no assembly required of your 2100-101U Flip Seat prior to mounting. Mounting of the seat and installation of replaceable parts will be covered in this chapter of the manual.

If you should experience any difficulty during the mounting or assembly of your seat, please contact STIDD customer service by calling 631-477-2400, ext. 135, or by emailing [CustomerService@stidd.com](mailto:CustomerService@stidd.com) for assistance.

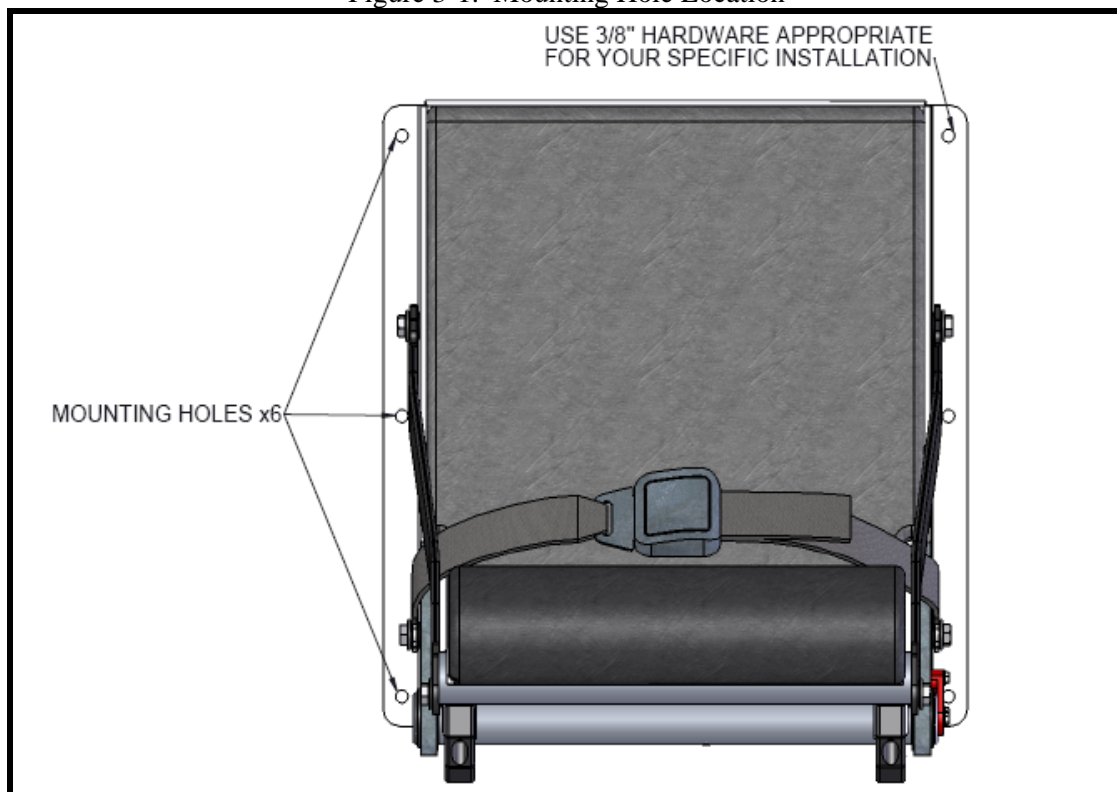
#### 3.2 MOUNTING

To securely fasten your seat to your desired mounting surface, six (6) mounting holes have been pre-drilled in the seat back, as seen below in Figure 3-1.

Place the seat in the chosen location. Using the existing mounting holes in the seat, locate and drill six (6) matching holes in the mounting surface.

Using 3/8" hardware appropriate for your specific installation (not supplied), securely fasten the seat to the mounting surface.

Figure 3-1. Mounting Hole Location



### 3.3 TENSION MEMBER REPLACEMENT

To replace a malfunctioning or broken tension member contact STIDD Systems Inc. to purchase a Tension Member Kit (PN: 2100-010-001).

Begin replacement by removing the existing tension member. Remove the two (2) 3/8'' hex head bolts that secure the member to the seat. Remove and discard existing hardware, including all washers. New hardware has been provided in the Tension Member Kit.

The Tension Member Kit includes the following hardware:

- (1) Seat Tension Member
- (2) 3/8''-16 Nylock Nut
- (4) .380''x .875''x.075 Stainless Washer
- (8) .390''x.875''x.060'' Nylon Washer
- (2) 3/8''-16 x 1.25 Hex Head Bolt

To install the new Tension Member, place the supplied hardware as shown below in Figure 3-2.

On 3/8''-16 Hex Head bolt, place:

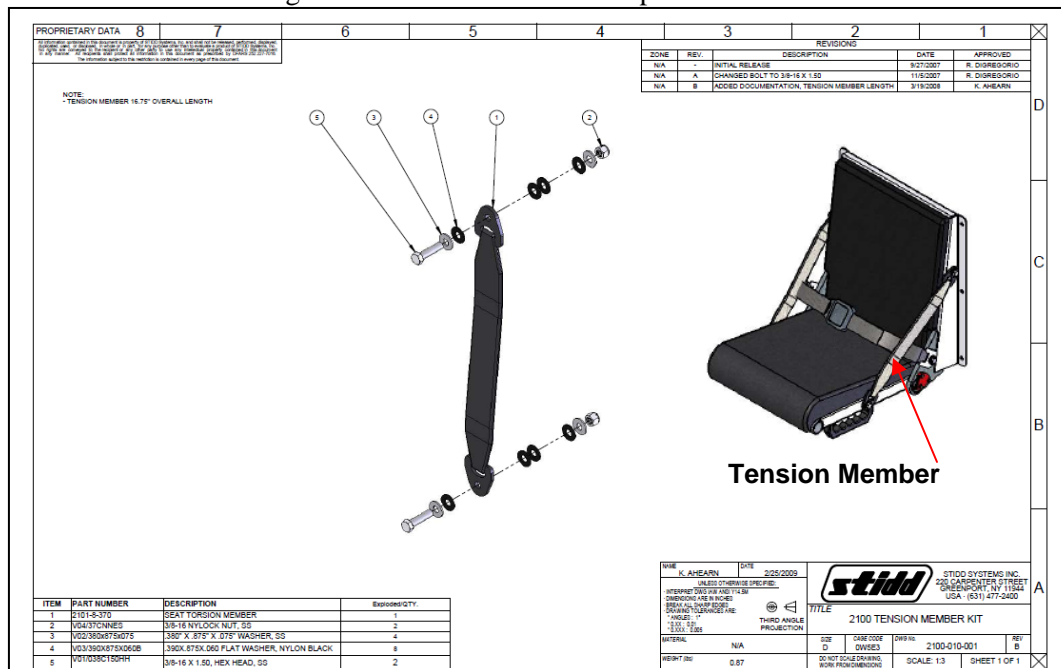
- (1) .380''x .875''x.075 Stainless Washer
- (1) .390''x.875''x.060'' Nylon Washer
- (1) Tension member
- (2) .390''x.875''x.060'' Nylon Washers.

Place this through the appropriate hole in the seat assembly, and secure by placing:

- (1) .390''x.875''x.060'' Nylon Washer
- (1) .380''x .875''x.075 Stainless Washer
- (1) 3/8'' Nylock Nut.

Repeat this procedure for the remaining Tension Member attachment point.

Figure 3-2. Tension Member Replacement







### 3.5 HANDLE REPLACEMENT

To replace a broken grab handle, contact STIDD Systems Inc. to purchase a 2100 Handle Kit, PN: 2100-010-003. Begin replacement by removing the broken handle. Remove the discard the handle and hardware. New hardware has been provided in the 2100 Handle Kit

The 2100 Handle Kit includes the following parts and hardware:

- (1) Nylon Pull Handle
- (2) 5/16"-18 x 1/5" Socket Head Cap Screw, SS
- (2) 5/16" Nylock nut, SS
- (2) .325"x.560"x.060" Washer, SS

To install the new handle, place the supplied hardware as shown below in Figure 3-4.

On each 5/16"-18 x 1.5" socket head cap screw, place the Nylon Pull Handle. Push both Screws through the appropriate hole in the seat pan and secure by placing on each bolt:

- (1) .325"x.560"x.060" Washer, SS
- (1) 5/16" Nylock nut, SS

Securely tighten hardware and test to insure handle is properly mounted.

Figure 3-4 Handle Replacement



## **CHAPTER 4**

### **SEAT ADJUSTMENT**

#### **4.1 PREFACE**

The 2100-101U Flip Seat has been designed as a fixed seat such that no seat adjustment is necessary. When installing, be sure to place the seat at the desired height and location.

## **CHAPTER 5**

### **PREVENTATIVE MAINTENANCE**

#### **5.1 GENERAL CARE**

The 2100-101U Flip Seat has been designed to provide extended service with minimal maintenance. There is no required maintenance of any mechanical systems on this seat. To prolong the life of the seat cushions, periodically clean them with soap and water.

In the event that a cushion should need to be replaced, detach the Velcro straps from the seat and contact STIDD Systems Inc. for replacement upholstery.

Seat Pan Upholstery part number: 2101-7-380  
Backrest Upholstery part number: 2101-7-390

## **CHAPTER 6**

### **TECHNICAL DOCUMENTATION**

#### **6.1 PARTS REPLACEMENT LIST**

Table 6-1. Parts List

<b>Reference #</b>	<b>Part Number</b>	<b>Description</b>
1	2100-010-001	TENSION MEMBER KIT
2	2100-010-002	SEAT BELT KIT
3	2100-010-003	2100 HANDLE KIT
5	2101-7-380	FLIP SEAT UPHOLSTERY
6	2101-7-390	FLIP SEAT BACKREST UPHOLSTERY

Figure 6-1. General Dimensions

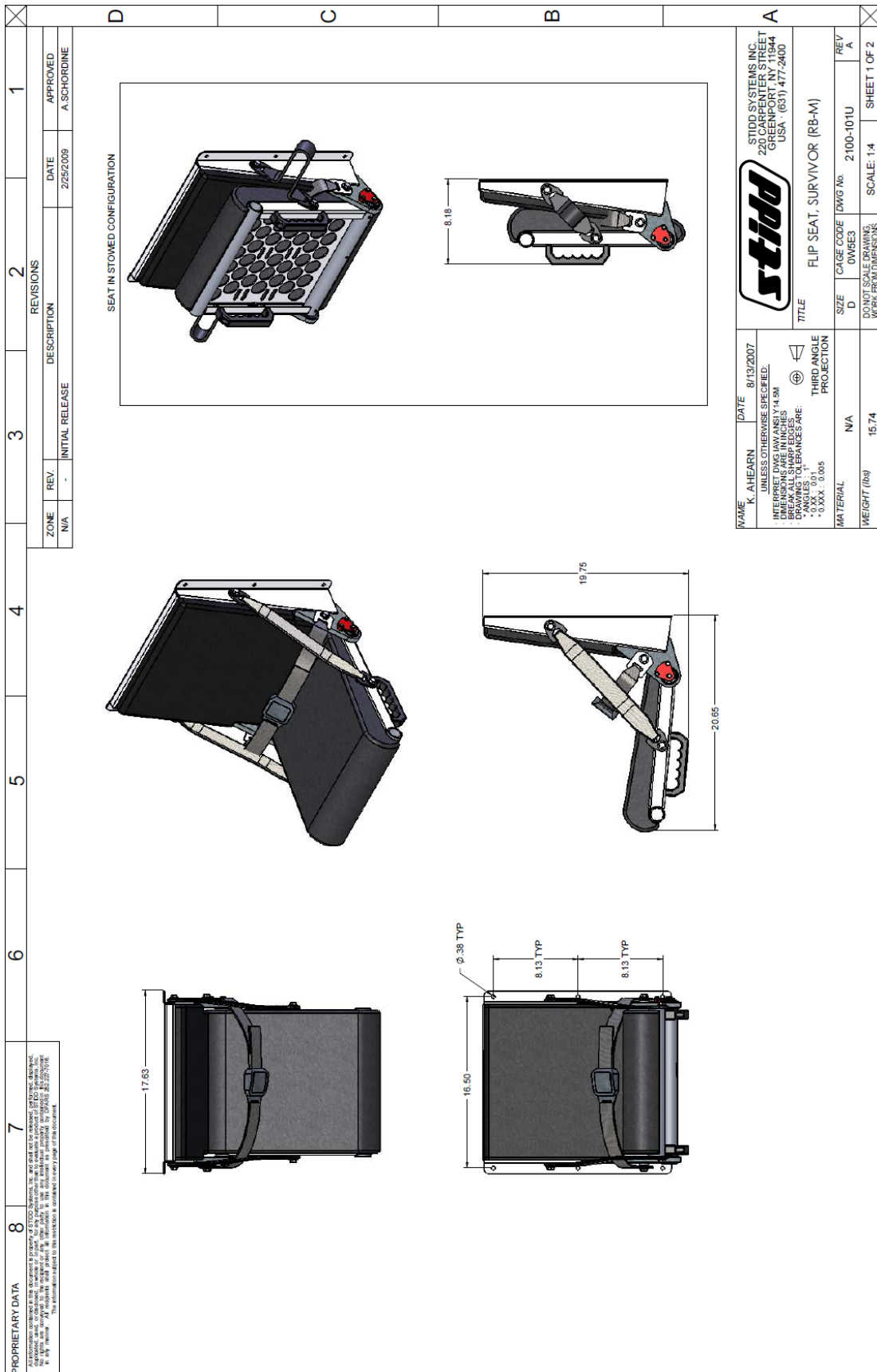


Figure 6.3. PPL Explode



## CHAPTER 7

### WARRANTY INFORMATION

#### 8.1 LIMITED WARRANTY

STIDD Systems, Inc. (SSI) warrants that its products (Products) will be free from defects in material and workmanship under normal and proper usage for a period of twelve (12) months from the date of shipment. SSI's obligation hereunder is limited to replacing or repairing, at SSI's option, Products or parts thereof determined by SSI to be defective, returned freight prepaid to SSI's place of business. All dismantling and assembly at Buyer's place of business and necessary packaging and transportation both ways shall be at Buyer's sole cost and expense. Replacement parts shall be shipped freight collect subject to the same terms, conditions and charges (except for the purchase price) as the original shipment. SSI shall be under no obligation to repair any Product which has been subjected to improper operation, maintenance or storage, accident, alteration, abuse or failure to follow normal operating or maintenance procedures as set forth in the "Installation, Operation & Maintenance Instructions" accompanying the Products. Alteration or repair by any other than authorized SSI personnel shall invalidate this Limited Warranty. SSI does not authorize any person to assume for it any other obligation or liability not specified in this Limited Warranty. Equipment, components, accessories and any other items not of SSI's manufacture are warranted by SSI to the Buyer only to the extent the same are warranted to SSI and enforceable by SSI against the supplier and/or manufacturer thereof and are subject to all terms and conditions of said warranties to SSI. In the event SSI provides service under the assumption that it is warranty service, and during the course of providing such service, SSI determines that the alleged defects are not covered by this Limited Warranty, Buyer agrees to pay for such service, including parts, at SSI's standard rates and prices then in effect. SSI shall in no event be liable for indirect, consequential or special damages, including, without limitation, any damages for lost profits, lost time or personal injuries, including such damages or injuries which may occur in the event of a breach of the foregoing limited warranty.

**THIS WARRANTY IS IN LIEU OF AND EXCLUDES ALL OTHER WARRANTIES, EXPRESS OR IMPLIED, INCLUDING THE WARRANTY OF MERCHANTABILITY OR FITNESS FOR A PARTICULAR PURPOSE.**

U.S. and Foreign Patents and Trademarks Pending and Issued.



STIDD SYSTEMS, Inc.

220 Carpenter Street · P.O. Box 87 · Greenport, NY 11944 · Tel: 631-477-2400 · Fax: 631-277-1095

Made in U.S.A.