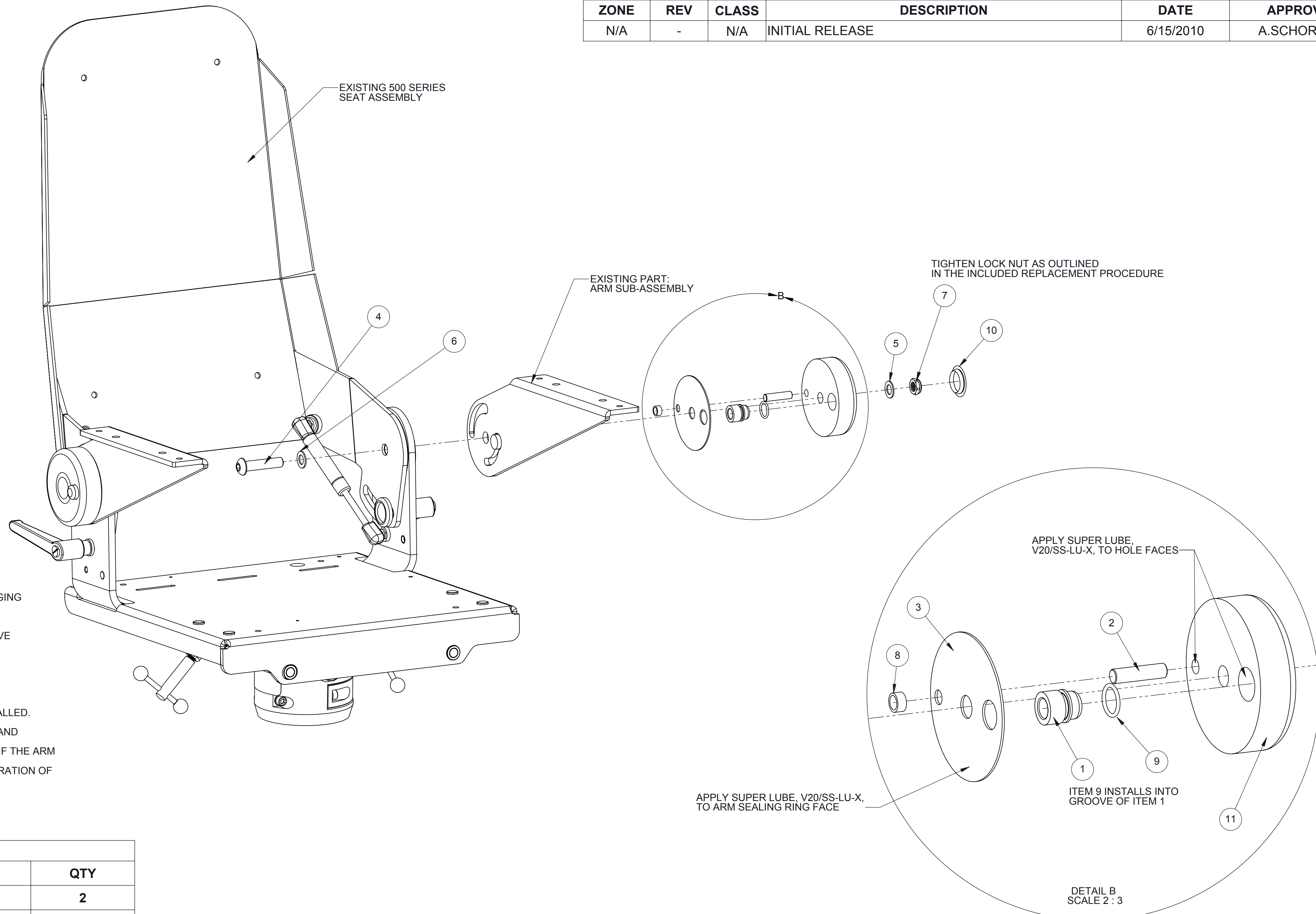


All information contained in this document is the intellectual property of STIDD Systems, Inc. and shall not be released, performed, displayed, duplicated, used, or disclosed, in whole or in part, within or outside the receiving party for any purpose other than to evaluate a document from STIDD Systems, Inc. No rights are conveyed to the receiving party or any others to use any intellectual property contained in this document in any manner. All US Government recipients shall protect all information in this document as prescribed by DFARS 252.227-7016. The information subject to this restriction is contained in every page of this document.
WARNING: This document may contain technical data subject to the United States Code of Federal Regulations Chapter 22, International Traffic in Arms Regulations (ITAR). The information herein shall not be exported or made available to any party other than the designated recipient without the express written permission of STIDD Systems, Inc. Violations of these export laws are subject to severe criminal penalties.

REVISIONS					
ZONE	REV	CLASS	DESCRIPTION	DATE	APPROVED
N/A	-	N/A	INITIAL RELEASE	6/15/2010	A.SCHORDINE



ARM HUB REPLACEMENT PROCEDURE:

- CAREFULLY PRY THE RUBBER HUB CAP (10) OFF OF EACH HUB. DO NOT WORRY ABOUT DAMAGING THE RUBBER HUB CAPS; NEW ONES HAVE BEEN PROVIDED.
- USING A 3/8" ALLEN WRENCH, HOLD THE BUTTON HEAD BOLT (4) FROM ROTATING AND REMOVE THE HUB LOCK NUT (7) FROM EACH HUB.
- PULL THE HUB (11) OFF OF THE ARM SUB-ASSEMBLY.
- APPLY SUPER LUBE GREASE (12) TO THE AREAS MARKED ON THIS PRINT
- PUSH THE NEW HUB ONTO ARM SUB-ASSEMBLY MAKING SURE ALL PARTS HAVE BEEN REINSTALLED.
- WHILE HOLDING THE BUTTON HEAD BOLT FROM ROTATING, INSTALL THE NEW HUB LOCK NUT AND WASHER (5). TIGHTEN THE HUB LOCK NUT AND CHECK THE ARM FOR SMOOTH OPERATION. IF THE ARM IS TOO STIFF, LOOSEN THE LOCK NUT AND BUTTON HEAD BOLT SLIGHTLY UNTIL SMOOTH OPERATION OF THE ARM IS ACHIEVED. REPEAT FOR OTHER SIDE OF THE SEAT.
- SNAP THE NEW RUBBER HUB CAPS ONTO THE NEWLY INSTALLED HUBS.

BOM			
ITEM	PART NUMBER	DESCRIPTION	QTY
1	810-3-102	ARM LOCK BUTTON	2
2	810-3-103	ARM STOP PIN	2
3	810-3-104-T	ARM SEALING RING - TEAK	2
4	V01/050C225SHBH	1/2-13X2.25 SOCKET HEAD BUTTON HEAD SS	2
5	V02/515x875x057	.515" X .875" X .057" WASHER, SS	2
6	V03/500X875X060	.500X.875X.060 FLAT WASHER, NYLON	2
7	V04/50CFNNES-LP	1/2-13 NYLOCK NUT LOW PROFILE, SS	2
8	V06/MSI-0608-04	.375" ID X .500" OD X .250" SLEEVE BUSHING, M250	2
9	V12/OR068-087-093	.68" ID X .87" OD X .093" BUNA O-RING	2
10	V14/C-890-601	PLASTIC HUB CAP	2
11	V15/V-810-3101-T	VARNISH, TEAK ARM HUB	2
12	V20/SS-LU-X	LURRICANT, CLEAR GREASE W/TEFLON (SUPER-LUBE)	1

ORIGINATOR A.SCHORDINE	DATE 6/15/2010
APPROVED R.PERRY	DATE 6/15/2010
UNLESS OTHERWISE SPECIFIED: · INTERPRET DWG IAW ANSI Y14.5M · DIMENSIONS ARE IN INCHES · BREAK ALL SHARP EDGES · DRAWING TOLERANCES ARE: * ANGLES : 1° * 0.XX : 0.01 * 0.XXX : 0.005	
MATERIAL N/A	THIRD ANGLE PROJECTION
WEIGHT (lbs) N/A	

STIDD Systems, Inc.

STIDD SYSTEMS INC.
 220 CARPENTER STREET
 GREENPORT, NY 11944
 USA · (631) 477-2400

TITLE
UPGRADE KIT, TEAK ARM HUB ASSEMBLY

SIZE D	CAGE CODE 0W5E3	DWG No. 810-010-101-T	REV -
-----------	--------------------	--------------------------	----------

DO NOT SCALE DRAWING
 WORK FROM DIMENSIONS

SCALE: 1:3

SHEET 1 OF 1

D
C
B
A