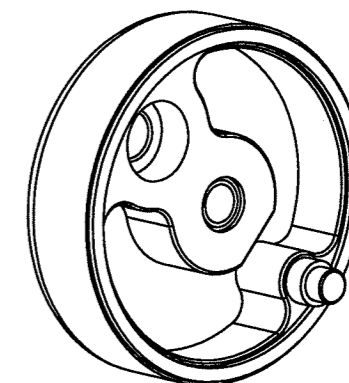
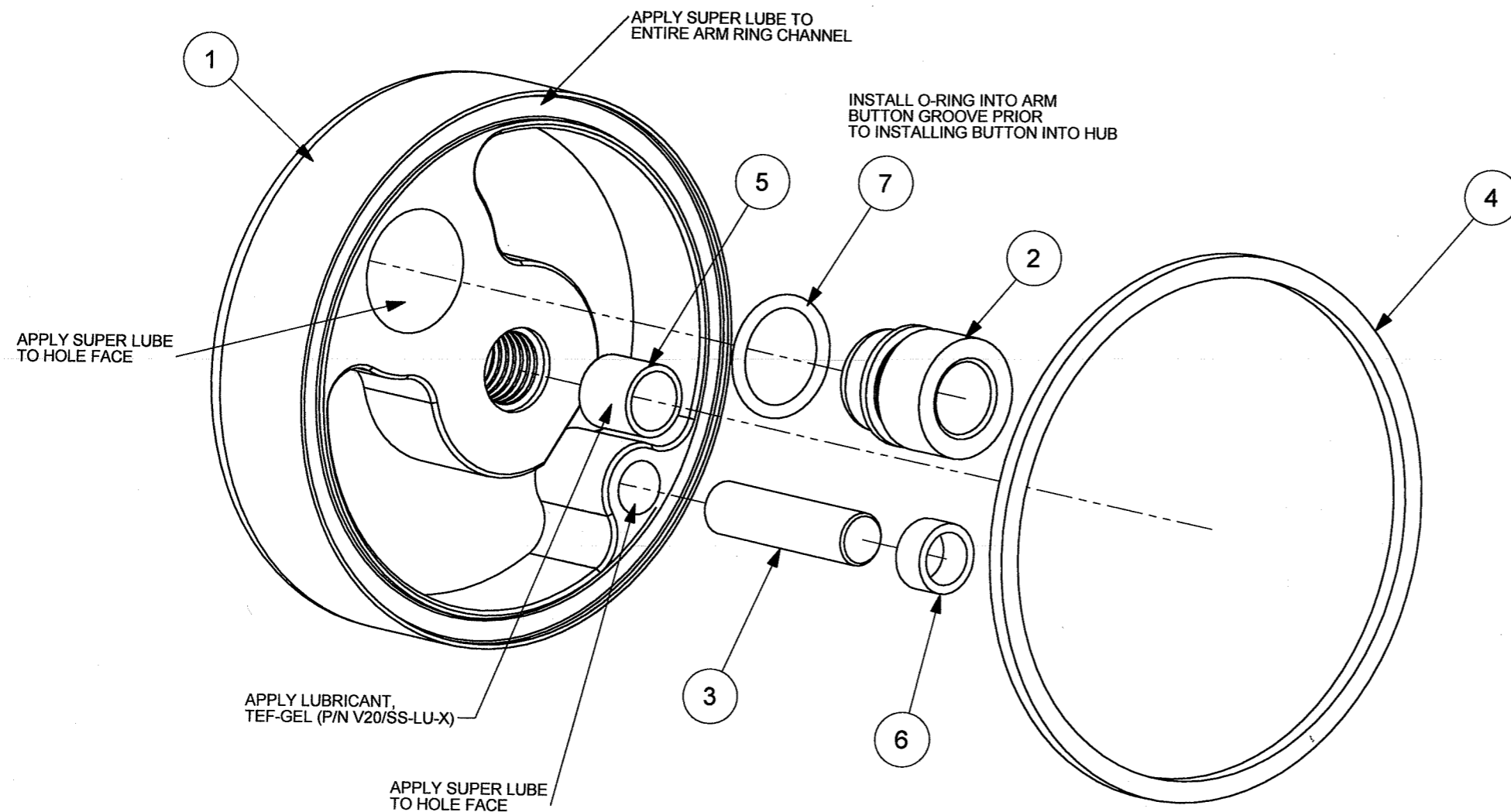


All information contained in this document is property of STIDD Systems, Inc. and shall not be released, performed, displayed, duplicated, used, or disclosed, in whole or in part, for any purpose other than to evaluate a product of STIDD Systems, Inc. No rights are conveyed to the recipient or any other party to use any intellectual property contained in this document in any manner. All recipients shall protect all information in this document as prescribed by DFARS 252.227-7016. The information subject to this restriction is contained in every page of this document.



SCALE: 1:2

ITEM	PART NUMBER	Description	810-1-100/QTY.
1	810-3-101	ARM HUB	1
2	810-3-102	ARM LOCK BUTTON	1
3	810-3-103	ARM STOP PIN	1
4	810-3-104	ARM SEALING RING	1
5	V05/1185-8CN-750	1/2-13 X .500, NON-LOCKING STI, SS	1
6	V06/MSI-0608-04	.375" ID X .500" OD X .250" SLEEVE BUSHING, M250	1
7	V12/OR068-087-093	.68" ID X .87" OD X .093" BUNA O-RING	1

NAME: A.SCHORDINE DATE: 5/2/2008

FABRICATION INSTRUCTIONS UNLESS OTHERWISE SPECIFIED:

- INTERPRET DWG IAW ANSI Y14.5M
- DIMENSIONS ARE IN INCHES
- BREAK ALL SHARP EDGES
- DRAWING TOLERANCES ARE:

* ANGLES : 1°
 * 0.XX : 0.01
 * 0.XXX : 0.005

THIRD ANGLE PROJECTION

MATERIAL: N/A

WEIGHT (lbs): 0.83



STIDD SYSTEMS INC.
 220 CARPENTER STREET
 GREENPORT, NY 11944
 USA · (631) 477-2400

TITLE

ARM HUB ASSEMBLY

SIZE: B	CAGE CODE: 0W5E3	DWG No.: 810-1-100	REV: -
DO NOT SCALE DRAWING. WORK FROM DIMENSIONS		SCALE: 1:1	SHEET 1 OF 1

PROPRIETARY DATA 8

7

6

5

4

3

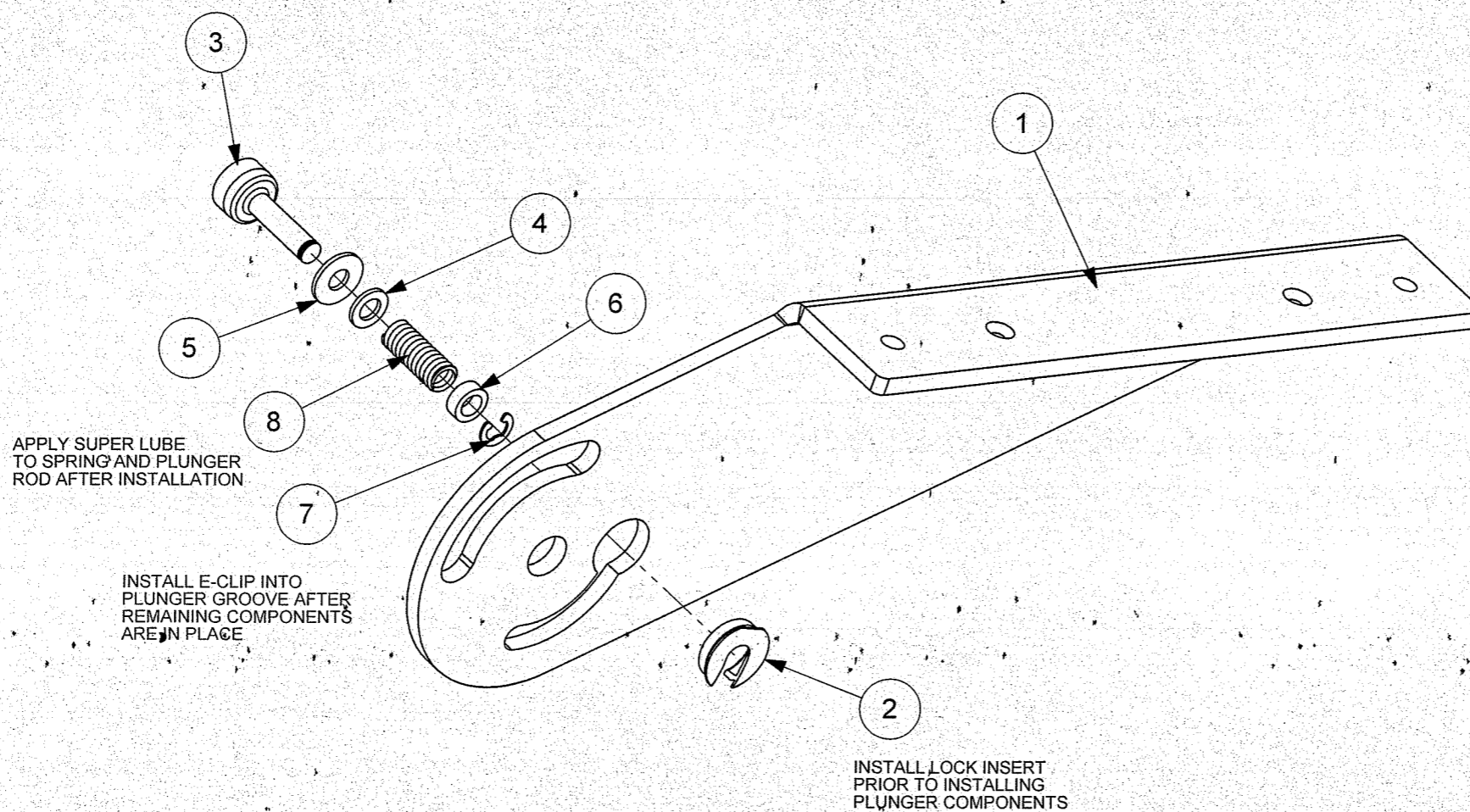
2

1

All information contained in this document is property of STIDD Systems, Inc. and shall not be released, performed, displayed, duplicated, used, or disclosed, in whole or in part, for any purpose other than to evaluate a product of STIDD Systems, Inc. No rights are conveyed to the recipient or any other party to use any intellectual property contained in this document in any manner. All recipients shall protect all information in this document as prescribed by DFARS 252.227-7016. The information subject to this restriction is contained in every page of this document.

REVISIONS

ZONE	REV.	DESCRIPTION	DATE	APPROVED
	-	SOLIDWORKS RELEASE	5/2/2008	A.SCHORDINE
BOM	A	CORRECTED BOM CALLOUT	11/13/2008	A.SCHORDINE



ITEM	PART NUMBER	Description	510-1-092-R/QTY.
1	510-4-094-R	500 ARM - RIGHT	1
2	810-3-093	ARM LOCK INSERT	1
3	810-3-099	ARM LOCK PLUNGER	1
4	V02/325x560x060	.325" X .560" X .060" WASHER, SS	1
5	V03/312X750X060	.312X.750X.060 FLAT WASHER, NYLON	1
6	V03/315X500X187	.315X.500X.187 FLAT WASHER, NYLON	1
7	V08/RRR-031	.312 EXTERNAL RETAINING RING, SS	1
8	V10/CS420x055x100	.420x .055Wx 1.00L COMP. SPRING, SS	1

NAME R. KOCH	DATE 5/2/2008
FABRICATION INSTRUCTIONS UNLESS OTHERWISE SPECIFIED: * INTERPRET DWG IAW ANSI Y14.5M * DIMENSIONS ARE IN INCHES * BREAK ALL SHARP EDGES * DRAWING TOLERANCES ARE: * ANGLES: 1° * 0.XX: 0.01 * 0.XXX: 0.005	
MATERIAL N/A	THIRD ANGLE PROJECTION
WEIGHT (lbs) 1.51	



STIDD SYSTEMS INC.
220 CARPENTER STREET
GREENPORT, NY 11944
USA · (631) 477-2400

TITLE

ARM SUB-ASSEMBLY, RIGHT

SIZE B	CAGE CODE 0W5E3	DWG No. 510-1-092-R	REV A
DO NOT SCALE DRAWING, WORK FROM DIMENSIONS		SCALE: 1:2	SHEET 2 OF 2