

Series 500, 500N & 1200

Backrest Replacement Procedure



STIDD Systems, Inc.

220 Carpenter Street • P.O. Box 87 • Greenport, NY 11944 • Tel: 631-477-2400 • Fax: 631-477-1095

Made in U.S.A.



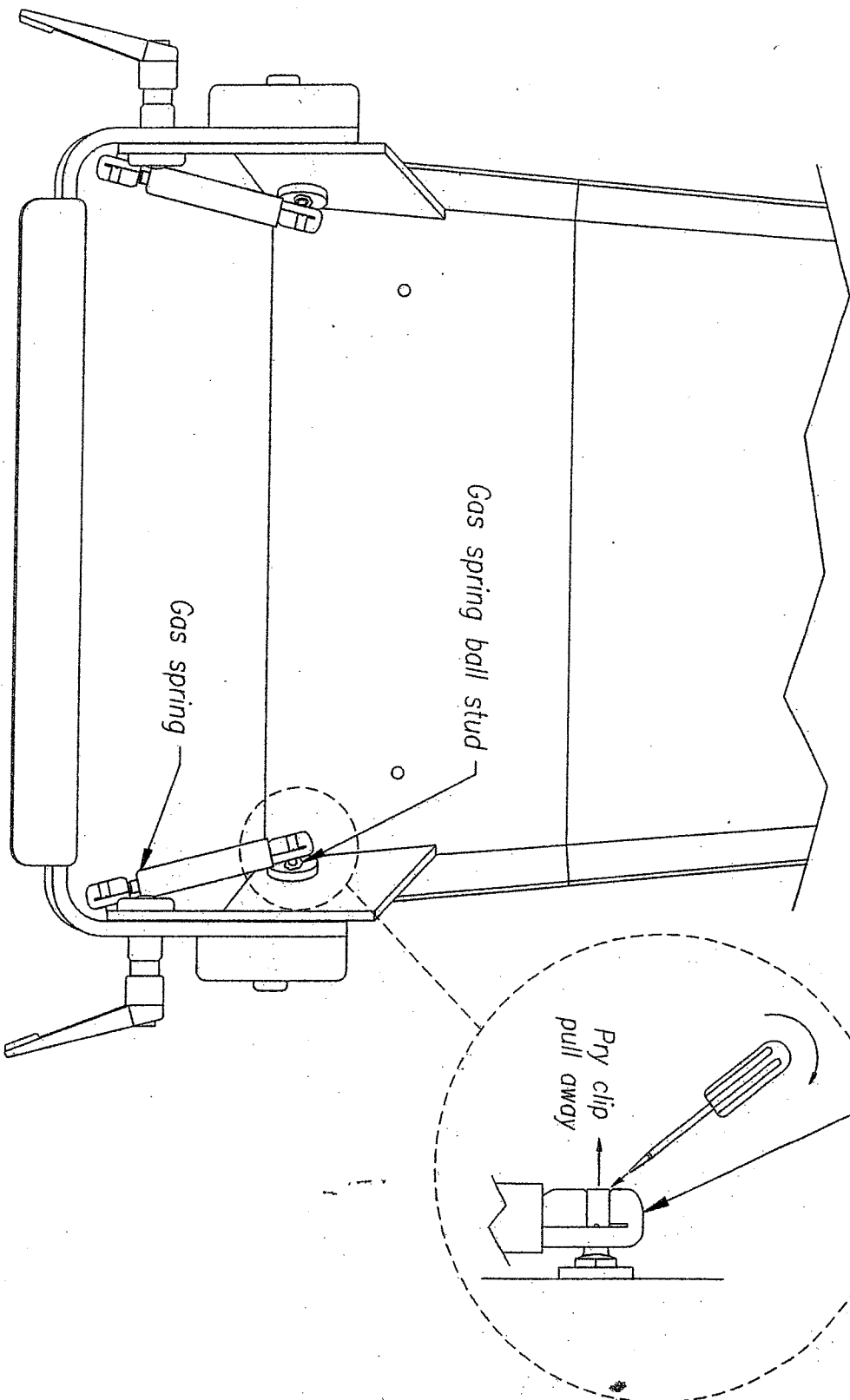
BACKREST REPLACEMENT PROCEDURE: (see Figure 1)

- Disassemble and remove the two recline locking handles. Set aside for reassembly.
- Using a flat head screw driver pry the clip away from the top mount of the gas spring and pull the gas spring off of the ball stud located on the backrest. Repeat for other side.
- CAREFULLY pry the rubber hub cap off of each hub.
Do not worry about damaging the rubber hub caps, new ones have been provided.
- Using a 3/8" allen wrench, hold the button head bolt from rotating and remove the hub lock nut from each hub.
- Using the 3/8" allen wrench, remove the two button head bolts.
- Remove the backrest by pushing in on the two backrest side supports.
- Install the new backrest.
- Install the two button head bolts and tighten until they are snug.
- While holding the button head bolt from rotating, install the hub lock nut and tighten. Check the arm for smooth operation. If the arm is too stiff, loosen the lock nut then loosen the button head bolt slightly and repeat the installation of the lock nut. Repeat for other side.
- Snap the new rubber hub caps onto hubs.
- Snap the gas spring onto the ball studs located on the backrest.
Install the two recline locking handles. (See Figure 2)

NOTES:

1. Upholstery removed for clarity.

Gas spring top mount housing



PROPRIETARY

This document and all information contained, is the property of SHDD Systems, Inc. and shall not be copied, reproduced or disclosed without the expressed written permission of SHDD Systems, Inc.



GAS SPRING REMOVAL ILLUSTRATION

500 SERIES SEAT

PART NUMBER:

N/A

REV:

0

DRAWN BY:

R. Disinigravia

DATE:

29 NOV 95

SCALE:

N/A

CHECKED BY:

W. Segani

TOLERANCES
* EXCEPT AS NOTED *

DECIMAL:	FRACTIONAL:	ANGULAR:
+ .1	+ .015	+ 1 DEG.
- .005	- .015	- 1 DEG.

F
E
D
C
B
A

2
3
4
5
6

Upholstery removed for clarity.

Gas spring top mount housing

1. Upholstery removed for clarity.

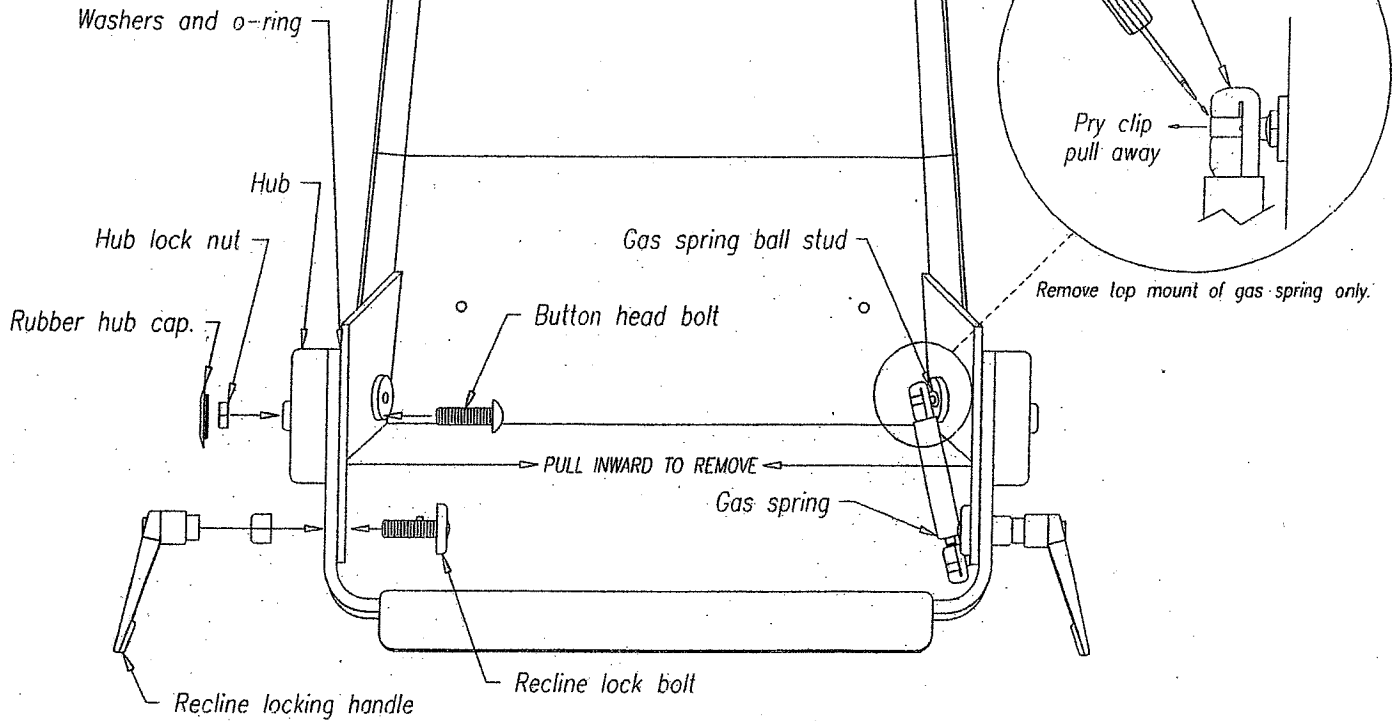
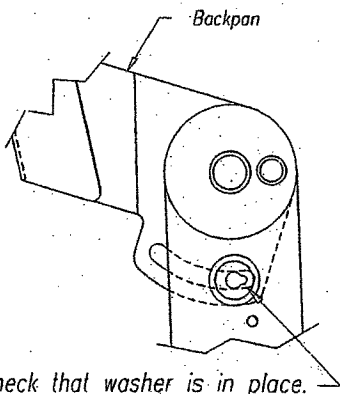


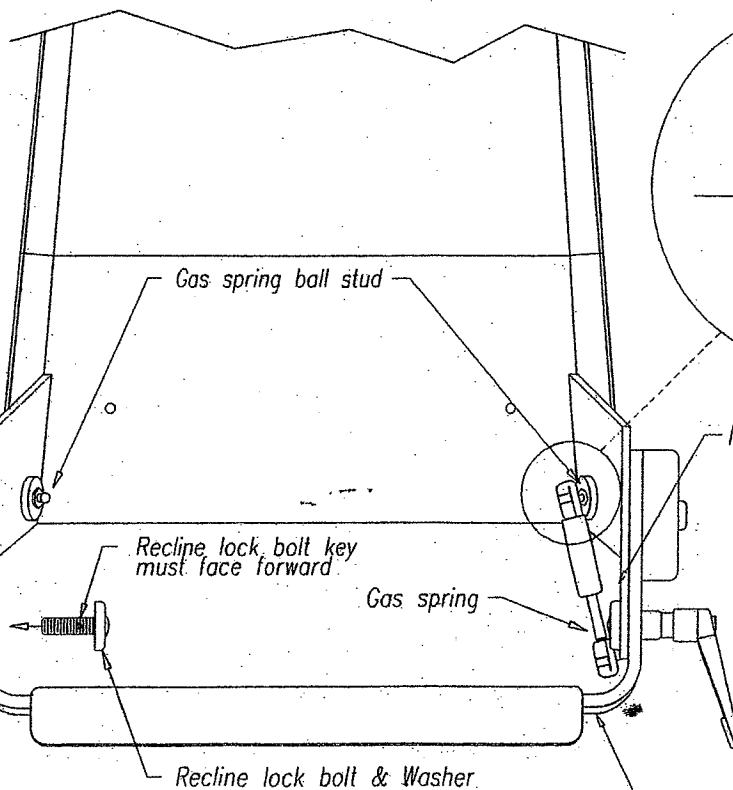
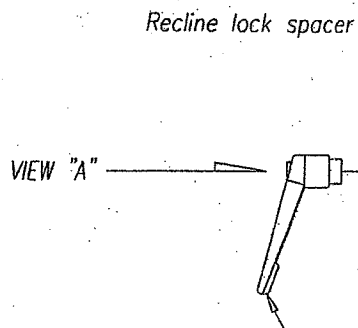
FIGURE 1

Upholstery removed for clarity.

VIEW "A"



Check that washer is in place.
Ensure Recline Lock Bolt Key
is facing forward in keyway.



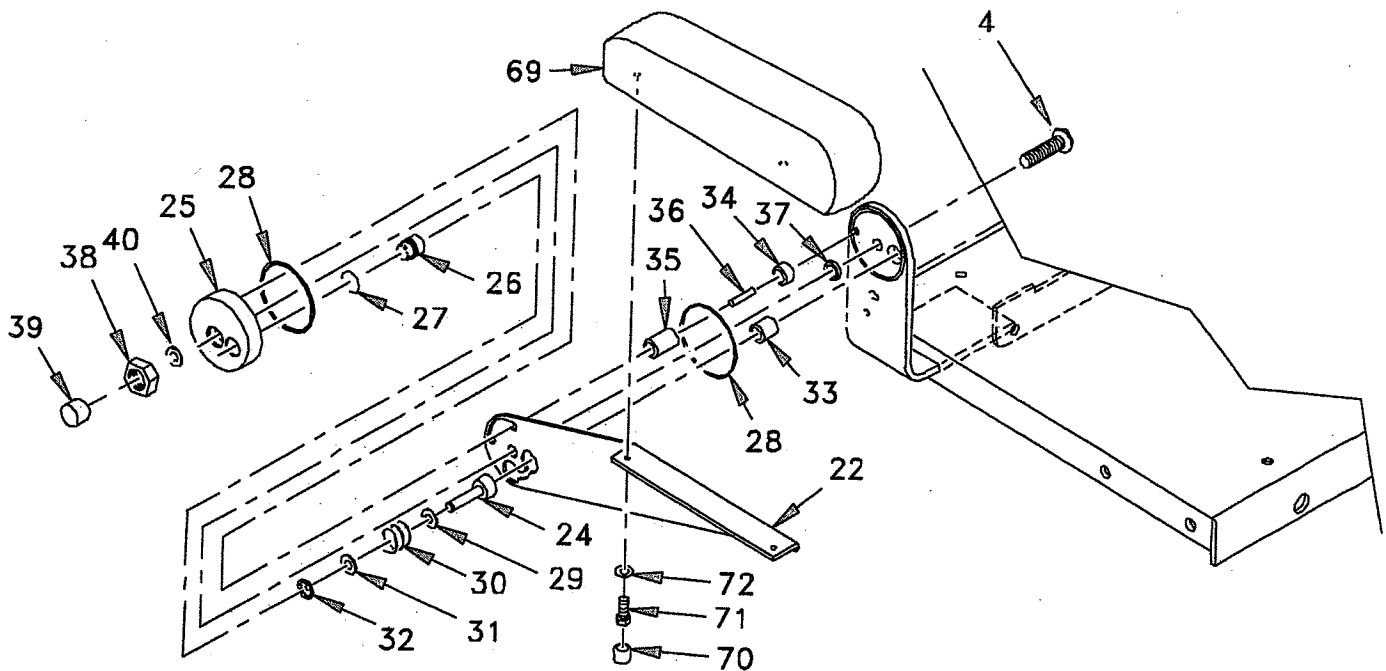
Note: Ensure that gas
spring is installed
with the rod end
down (as shown).



STIDD SYSTEMS, INC. SERIES 500 MARINE SEATS

Arm Hub Replacement Procedure: (see Figure 1 and Parts List Excerpt)

- CAREFULLY pry the rubber hub cap off of each hub. Do not worry about damaging the rubber hub caps, new ones have been provided.
- Using a 3/8" allen wrench, hold the button head bolt from rotating and remove the hub lock nut from each hub.
- Using the 3/8" allen wrench, remove the button head bolt.
- Pull the hub off of the arm assembly.
- Apply grease the inside of the hub.
- Push new hub onto arm assembly making sure all parts have been reinstalled.
- Install the button head bolts and tighten until they are snug.
- While holding the button head bolt from rotating, install the hub lock nut and tighten. Check the arm for smooth operation. If the arm is too stiff, loosen the lock nut then loosen the button head bolt slightly and repeat the installation of the lock nut. Repeat for other side.
- Snap the new rubber hub caps onto hubs.



PARTS LIST FOR 500-200-xx

PLISN	NOMENCLATURE	PART NUMBER	FIGURE/PAGE NUMBER	ITEM NO.
A005	BOLT ASSEMBLY, BACKREST PIVOT	510-1164	1/1	4
A022	ARM, SUBASSEMBLY (R)	510-1092-R	1/1	22
A023	ARM, SUBASSEMBLY (L)	510-1092-L	1/1	23
A024	PLUNGER, ARM LOCK	810-3099	1/1	24
A025	HUB, ARM	810-3101	1/1	25
A026	BUTTON, ARM LOCK	810-3102	1/1	26
A027	SEALING RING, ARM	810-3104	1/1	28
A028	O-RING	OR068X087X093	1/1	27
A029	WASHER, FLAT, NYLON	312X500X060	1/1	29
A030	SPRING, COMPRESSION	CS420X055X1.00	1/1	30
A031	WASHER, FLAT, NYLON	312X500X187	1/1	31
A032	RING, RETAINING, "E" STYLE	RRE-031	1/1	32
A033	BUSHING, SLEEVE	MSI-1214-16	1/1	33
A034	BUSHING, SLEEVE	GSI-0809-16	1/1	34
A035	BUSHING, SLEEVE	MSI-0608-04	1/1	35
A036	PIN, STOP, ARM	810-3103	1/1	36
A037	WASHER, FLAT, NYLON	625X1.50X030	1/1	37
A038	WASHER, FLAT, NYLON	500X875X060	1/1	38
A039	PLUG, FINISHING, BLACK	9750K55	1/1	39
A041	NUT, 1/2" JAM	510-4060-L	1/2	40
A042	HANGER, FOOTREST, FOLDED	510-4060-R	1/2	41
A043	CROSSBAR, FOOTREST	510-3080	1/2	42
A044	PLATE, FOOT SUBASSEMBLY	510-1062	NOT ILLUSTRATED	
A045	WELDMENT, FOOTREST	510-2064	1/2	43
A046	PLUNGER, FOOTREST	510-3072	1/2	44
A047	STUD, PLUNGER, FOOTREST	510-3074	1/2	45
A048	SPACER, SPRING, FOOTREST	510-3076	1/2	46
A049	TREAD, FOOTREST, FOLDED	510-4082	1/2	47
A050	KNOB, BALL, BLACK	K-B-8	1/2	48
A051	SPRING, COMPRESSION	CS-1.09X082X2.00	1/2	49
A052	MEDIUM PDM PEDESTAL ASSEMBLY	510-1098-2	1/3	50
A053	WELDMENT, PDM PEDESTAL, MEDIUM	540-2002-2	1/3	51
A054	CLAMP, COLLAR, PEDESTAL	510-3112	1/3	52
A069	UPHOLSTERY, SEAT	510-7200	1/1	67
A070	UPHOLSTERY, LOW BACK	520-7010	1/1	68
A071	UPHOLSTERY, ARM-REST	510-7210	1/1	69
A072	UPHOLSTERY, CAP	C-1/4CAP	1/1	70
A073	SCREW, PHILLIPS, PANHEAD, SELF-TAPPING, SS	#14X.75	1/1	71
A074	WASHER, FLAT, SS	270X560X060	1/1	72