

Upholstery removed for clarity.

Gas spring top mount housing

1. Upholstery removed for clarity.

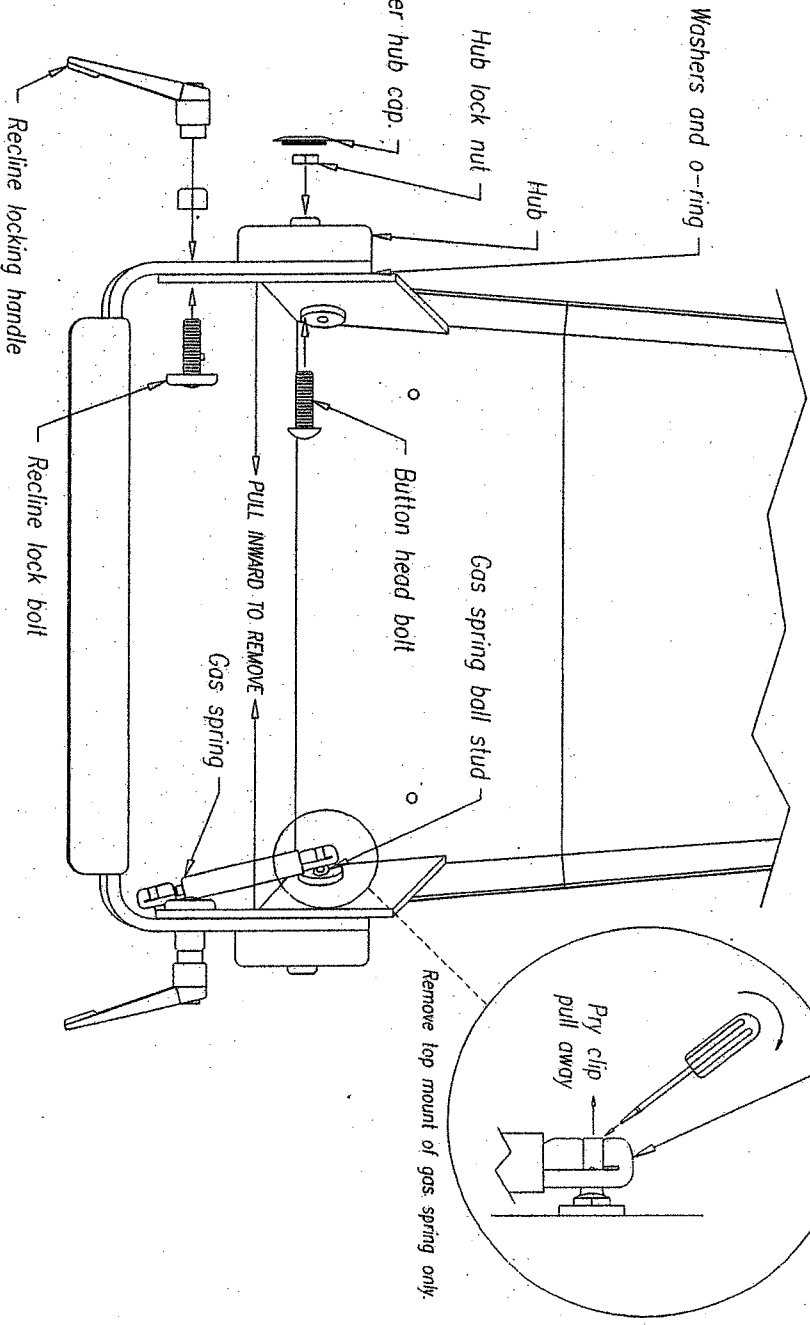


FIGURE 1

Upholstery removed for clarity.

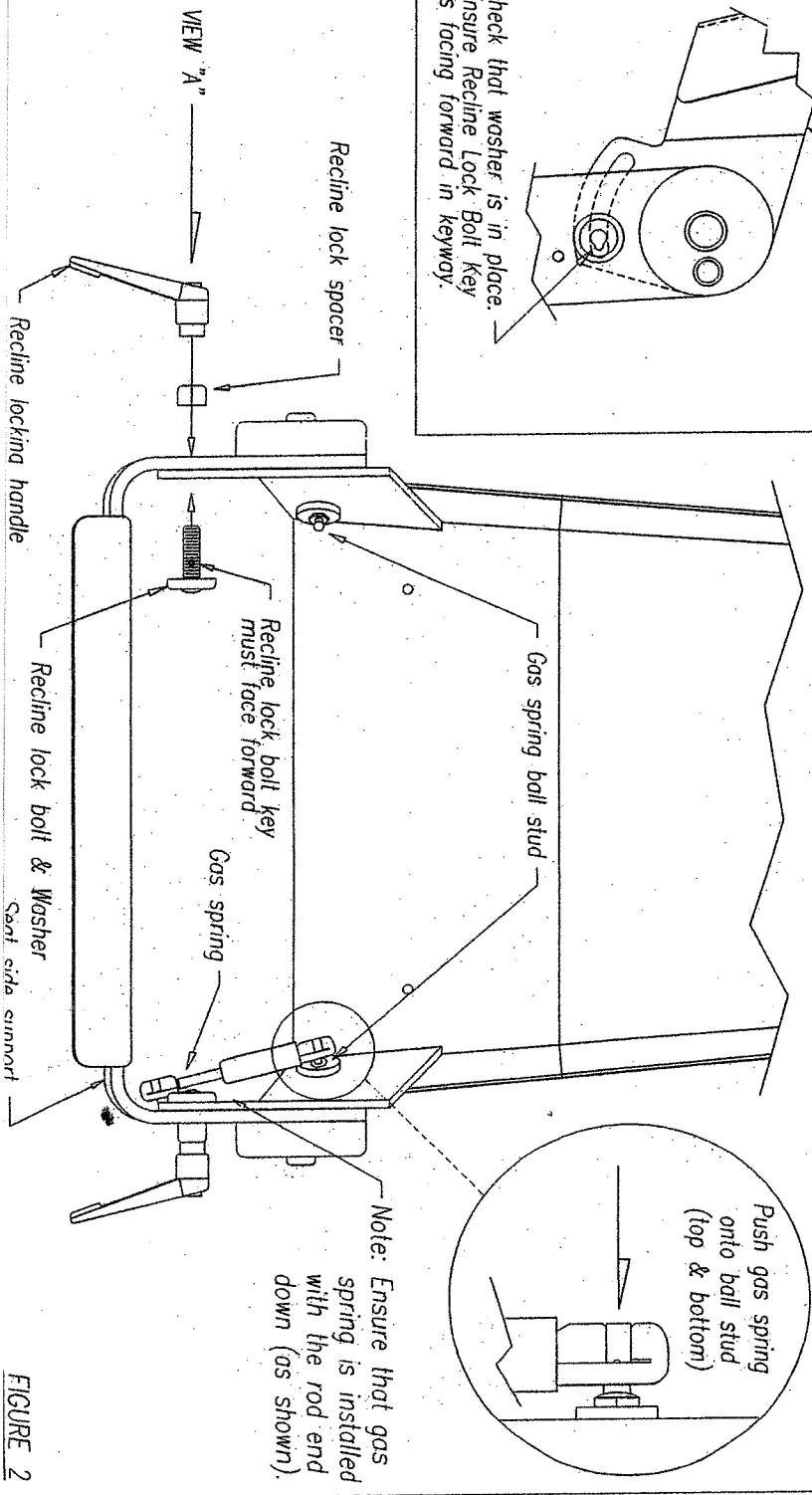
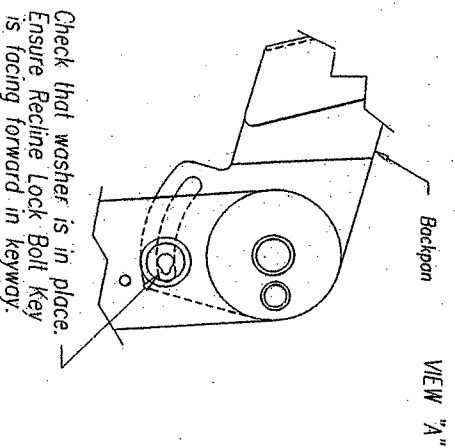
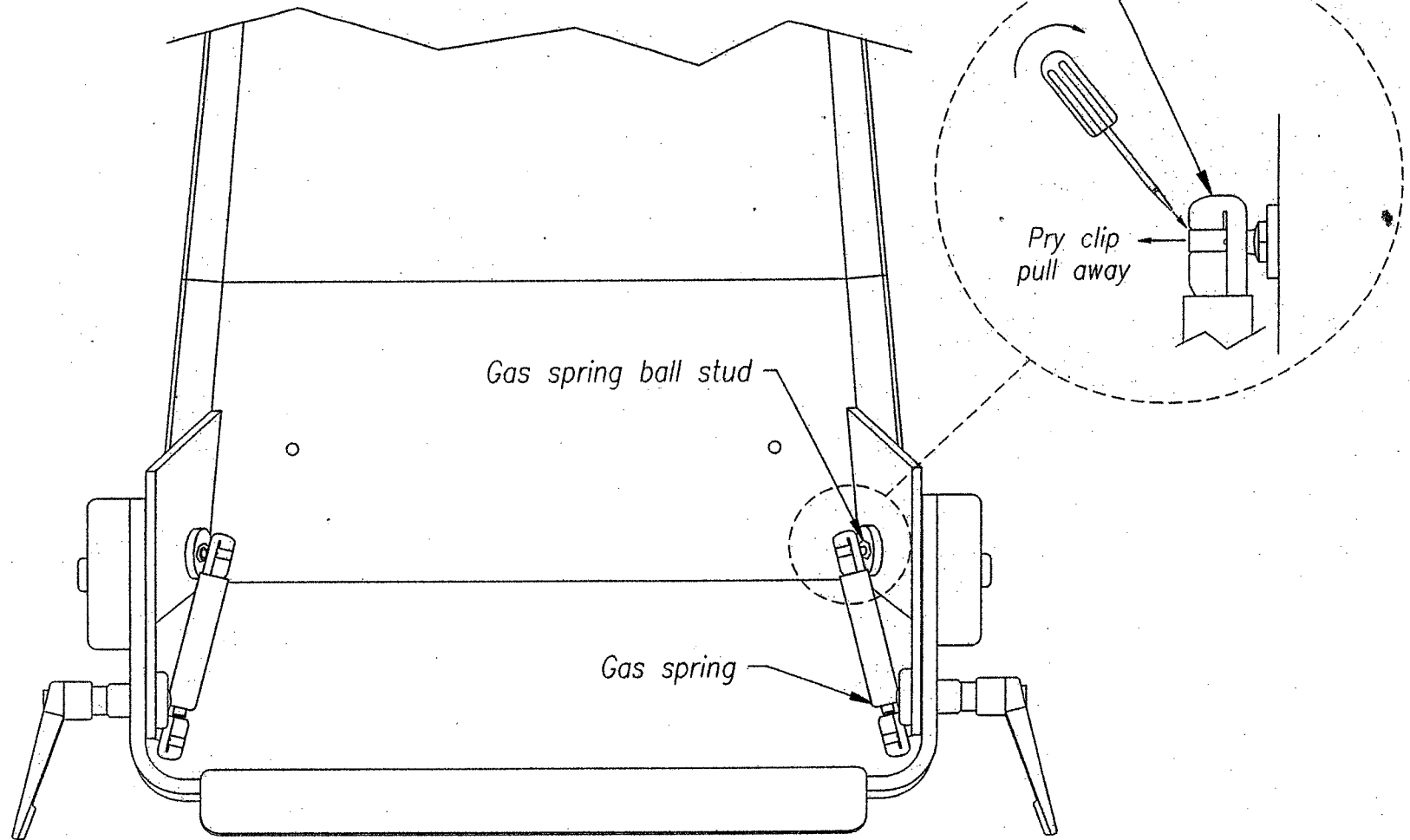


FIGURE 2

NOTES:

1. Upholstery removed for clarity.

Gas spring top mount housing



PROPRIETARY

This document and all information contained, is the property of STIDD Systems, Inc. and shall not be copied, reproduced or disclosed without the expressed written permission of STIDD Systems, Inc.



GAS SPRING REMOVAL ILLUSTRATION

500 SERIES SEAT

PART NUMBER:

N/A

REV.

0

DRAWN BY:

R. DiGregorio

DATE:

29 NOV 95

SCALE:

N/A

CHECKED BY:

W. Gezari

TOLERANCES

* EXCEPT AS NOTED *

DECIMAL:	FRACTIONAL:	ANGULAR:
.X .1		
+ .XX .01	+ .015	+ 1 DEG.
- .XXX .005	- .015	- 1 DEG.



BACKREST REPLACEMENT PROCEDURE: (see Figure 1)

- Disassemble and remove the two recline locking handles. Set aside for reassembly.
- Using a flat head screw driver pry the clip away from the top mount of the gas spring and pull the gas spring off of the ball stud located on the backrest. Repeat for other side.
- CAREFULLY pry the rubber hub cap off of each hub.
Do not worry about damaging the rubber hub caps, new ones have been provided.
- Using a 3/8" allen wrench, hold the button head bolt from rotating and remove the hub lock nut from each hub.
- Using the 3/8" allen wrench, remove the two button head bolts.
- Remove the backrest by pushing in on the two backrest side supports.
- Install the new backrest.
- Install the two button head bolts and tighten until they are snug.
- While holding the button head bolt from rotating, install the hub lock nut and tighten. Check the arm for smooth operation. If the arm is too stiff, loosen the lock nut then loosen the button head bolt slightly and repeat the installation of the lock nut. Repeat for other side.
- Snap the new rubber hub caps onto hubs.
- Snap the gas spring onto the ball studs located on the backrest.
Install the two recline locking handles. (See Figure 2)



STIDD SYSTEMS, INC. SERIES 500 MARINE SEATS

Arm Hub Replacement Procedure: (see Figure 1 and Parts List Excerpt)

- CAREFULLY pry the rubber hub cap off of each hub. Do not worry about damaging the rubber hub caps, new ones have been provided.
- Using a 3/8" allen wrench, hold the button head bolt from rotating and remove the hub lock nut from each hub.
- Using the 3/8" allen wrench, remove the button head bolt.
- Pull the hub off of the arm assembly.
- Apply grease the inside of the hub.
- Push new hub onto arm assembly making sure all parts have been reinstalled.
- Install the button head bolts and tighten until they are snug.
- While holding the button head bolt from rotating, install the hub lock nut and tighten. Check the arm for smooth operation. If the arm is too stiff, loosen the lock nut then loosen the button head bolt slightly and repeat the installation of the lock nut. Repeat for other side.
- Snap the new rubber hub caps onto hubs.

