



OPERATIONS AND MAINTENANCE MANUAL

SERIES 500V5-RBM

Description, Operation, Maintenance and
Illustrated System Breakdown



**** UNCLASSIFIED ****

PROPRIETARY & BUSINESS SENSITIVE INFORMATION

All information contained in this document is property of STIDD Systems, Inc. and shall not be released, performed, displayed, duplicated, used, or disclosed, in whole or in part, within or outside the U.S. Government for any purpose other than to evaluate a document from STIDD Systems, Inc. No rights are conveyed to the Government or any other party to use any intellectual property contained in this document in any manner. The Government shall protect all information in this document as proscribed by DFARS 252.227-7016.

INTRODUCTION	1
GENERAL INFORMATION	2
INSTALLATION	3
SEAT ADJUSTMENT	4
SHOCK ABSORBER	5
PREVENTATIVE MAINTENANCE	6
TECHNICAL DOCUMENTATION	7
WARRANTY	8

**CHAPTER 1
INTRODUCTION**

**SECTION 1.1.
TABLE OF CONTENTS**

Table of Contents	Page Number
Chapter 1 INTRODUCTION	
Section 1.1	TABLE OF CONTENTS.....2
Section 1.2	LIST OF ILLUSTRATIONS.....3
Section 1.3	RECORD OF CHANGES.....4
Chapter 2 GENERAL INFORMATION	
Section 2.1	TAKING DELIVERY.....5
Section 2.2	UNPACKING THE SEAT.....5
Chapter 3 INSTALLATION	
Section 3.1	PREFACE.....6
Section 3.2	PEDESTAL.....6
Section 3.3	SEAT ASSEMBLY.....7
Section 3.4	FOOTREST ASSEMBLY.....8
Section 3.5	BACKREST GAS SPRINGS.....9
Section 3.6	BACKREST HARDWARE.....9
Chapter 4 SEAT ADJUSTMENT	
Section 4.1	ROTATIONAL.....10
Section 4.2	FORE/AFT.....10
Section 4.3	BACKREST.....10
Section 4.4	ARMREST.....10
Section 4.5	VERTICAL.....10
Chapter 5 SHOCK ABSORBER OPERATION	
Section 5.1	GENERAL INFORMATION.....11
Section 5.2	REBOUND DAMPENING.....11
Chapter 6 PREVENTATIVE MAINTENANCE	
Section 6.1	PEDESTAL MAINTENANCE.....12
Section 6.2	GENERAL CARE.....12
Section 6.3	REQUIRED TOOLS.....12
Section 6.4	TECHNICAL SUPPORT.....12
Chapter 7 TECHNICAL DOCUMENTATION	
Section 7.1	PARTS PRICE LIST.....13
Section 7.2	GENERAL DIMENSIONS.....14
Section 7.2	EXPLODED ASSEMBLY DRAWING.....15
Section 7.3	EXPLODED UPHOLSTERY DRAWING.....16
Chapter 8 WARRANTY	
Section 8.1	LIMITED WARRANTY.....17

SECTION 1.2

LIST OF TABLES AND ILLUSTRATIONS

Chapter 2 GENERAL INFORMATION

Table 1-1	Included Parts.....	5
-----------	---------------------	---

Chapter 3 INSTALLATION

Figure 3-1	Pedestal Mounting.....	6
Figure 3-2	Seat Installation.....	7
Figure 3-3	Footrest Assembly Installation.....	8
Figure 3-4	Backrest Gas Spring Installation.....	9

Chapter 4 SEAT ADJUSTMENT

Figure 4-1	Rotational Adjustment.....	10
Figure 4-2	Fore-Aft Adjustment.....	10
Figure 4-2	Backrest/Armrest Adjustment.....	10

Chapter 5 SHOCK ABSORBER OPERATION

Figure 5-1	Rebound Dampening Adjustment.....	11
------------	-----------------------------------	----

Chapter 6 PREVENTATIVE MAINTENANCE

Figure 6-1	Pedestal Bushing Adjustment.....	12
------------	----------------------------------	----

Chapter 7 TECHNICAL DOCUMENTATION

Table 7-1	Parts Price List.....	13
Figure 7-2	General Seat Dimensions.....	14
Figure 7-3	Exploded Assembly.....	15
Figure 7-4	Exploded Upholstery.....	16

CHAPTER 2

GENERAL INFORMATION AND PACKAGE INSPECTION

2.1 TAKING DELIVERY

Upon taking receipt of your STIDD seat, visually inspect packaging for any signs of damage. It is important to note that while your seat is packed to withstand the rigors of normal shipment, damage to the product during shipping can occur. Any damage must be immediately reported to the shipping carrier, and the original packaging materials must be saved for inspection for evidence of damage in transit.

It is important to note that your 500V5-RBM seat has been packaged in two separate boxes for shipment. As a result, some assembly is required, and is covered in Chapter 3 of this manual.

2.2 UNPACKING THE SEAT

Carefully remove the packaging materials from the seat. Exercise caution and DO NOT USE A KNIFE while opening the package or damage to the seat could result. Table 1-1 provides a list of parts and hardware included with your seat.

Table 1-1. Included Parts

Box #1		
Description	Quantity	Used In
Seat Assembly	1	
Footrest Assembly	1	
Seat Hardware Pack.....	1	
3/8"-18 SS Lock Nut w/ Washer	4	Footrest Assembly
Backrest Locking Handle Assembly	2	Backrest Assembly
Backrest Gas Spring	2	Backrest Assembly
5/16"-18 x 2" SS Socket Head Cap Screw and Washer	1	Seat Assembly (anti-removal bolt)
Pedestal Isolation Kit.....	1	
5/16"-18 x 1" SS Flat Head Socket Head Screw	8	Pedestal to Deck Attachment
5/16" Nylon Washers	8	Pedestal Attachment Screw
"Tef-Gel" Anti-Seize Compound, Tube	1	Pedestal Attachment Screw
Pedestal Isolation Gasket	1	Pedestal Installation
Box #2		
Description	Quantity	Used In
Pedestal Assembly	1	

CHAPTER 3

INSTALLATION

3.1 PREFACE

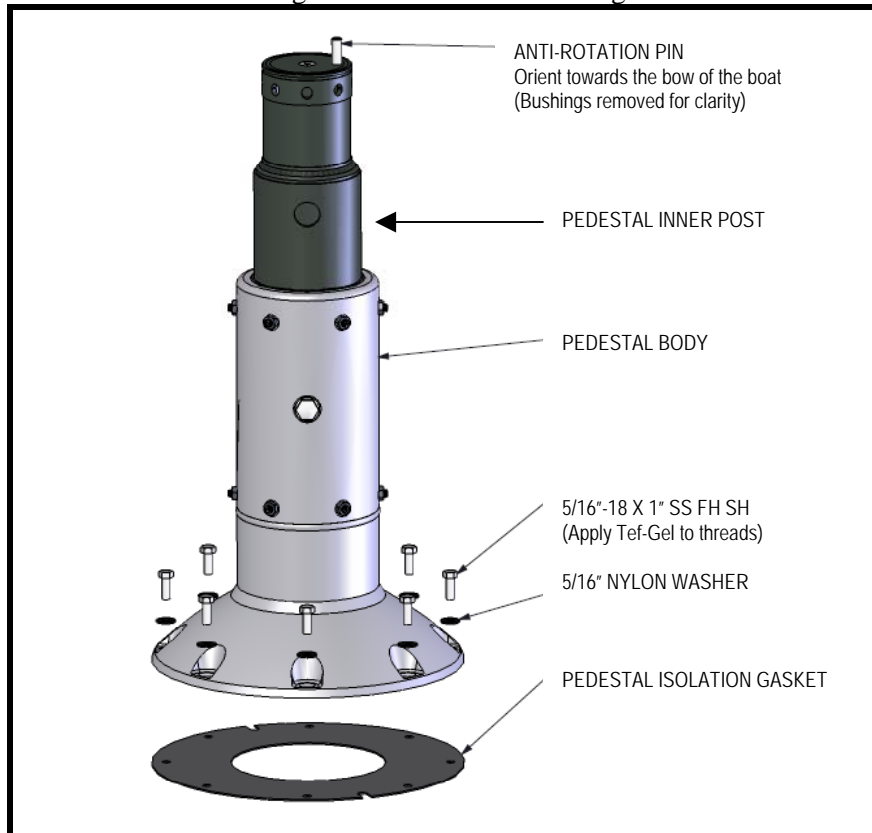
Your STIDD seat has been delivered to you in two boxes. Some assembly of the seat is required, and is outlined in this section of the manual. The Footrest Assembly must be bolted on, and the installer must attach the two Backrest Lock Handles and Gas Springs.

If you should experience any difficulty during the assembly of your seat, please contact STIDD Systems customer service by calling 631-477-2400, ext. 135 or e-mailing: CustomerService@stidd.com

3.2 PEDESTAL ATTACHMENT

1. Place Pedestal Isolation Gasket between the base of the Pedestal and the mounting surface. The gasket is required to isolate the seat assembly from the deck, preventing galvanic corrosion
2. Position the pedestal with the Anti-Rotation Pin oriented toward the bow of the boat (or the front of the seat) as seen in Figure 3-1.
3. Place the eight (8) 5/16" flat nylon washers on the eight (8) 5/16"-18 x 1" stainless steel flat head socket head cap screw provided in the Pedestal Isolation Kit. Apply "Tef-gel" anti-seize compound (included) to the eight (8) 5/16"-18 x 1" stainless steel flat head socket head cap screws, and secure the Pedestal to the mounting surface through the eight (8) holes in its base.

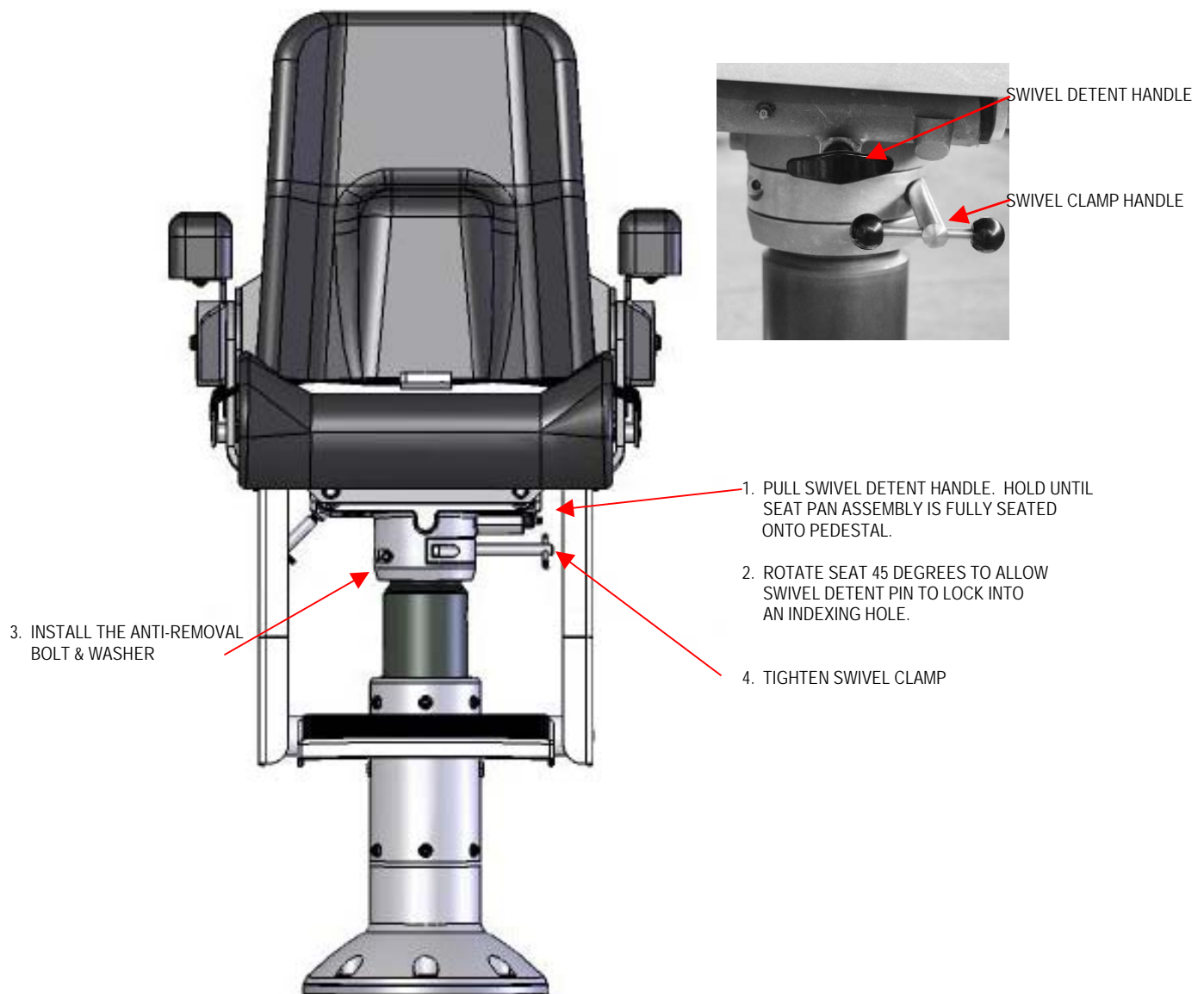
Figure 3-1. Pedestal Mounting



3.3 SEAT INSTALLATION

1. Place the Seat assembly onto the Pedestal at this time. The swivel detent handle on the left side must be pulled to allow the Pedestal to fully seat.
2. Rotate the seat 45 degrees in either direction to allow the swivel detent pin to lock into an indexing hole.
3. Insert and tighten the Anti-Removal Bolt (5/16"-8 x 2") and Washer into the appropriate hole in the slide casting.
4. Tighten the swivel clamp

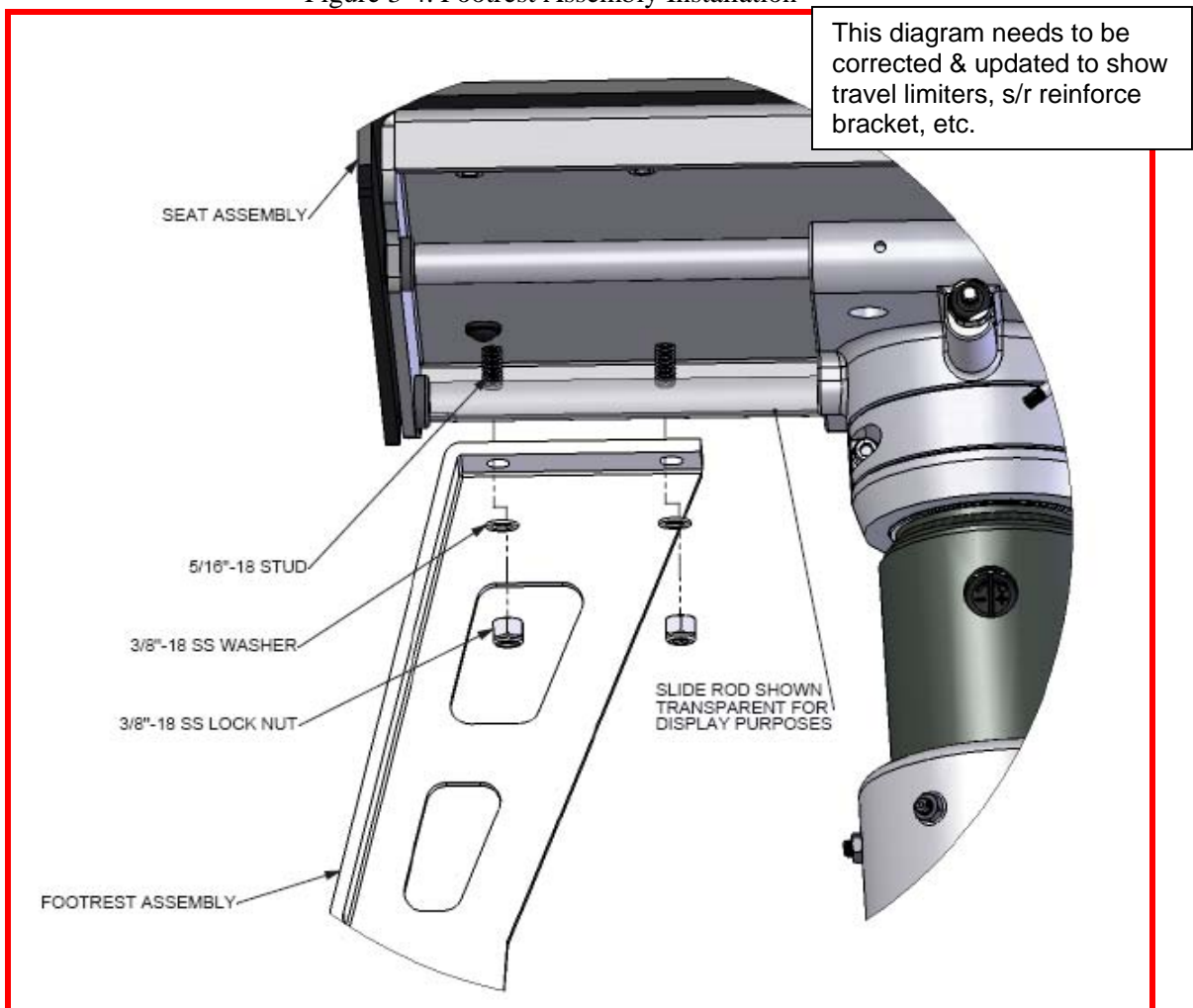
Figure 3-2. Seat Installation



3.4 FOOTREST ASSEMBLY INSTALLATION

1. To mount Footrest Assembly to the Seat Assembly, align the four (4) mounting holes of the Footrest Assembly with the four (4) studs on the seat pan, as seen below in figure 3-4.
2. Place the four (4) 3/8'' Stainless Steel Washers included in the Seat Hardware Pack on the four (4) studs. Secure the Footrest Assembly in place using the four (4) 3/8''-18 Stainless Steel Lock Nuts provided in the Seat Hardware Pack.

Figure 3-4. Footrest Assembly Installation



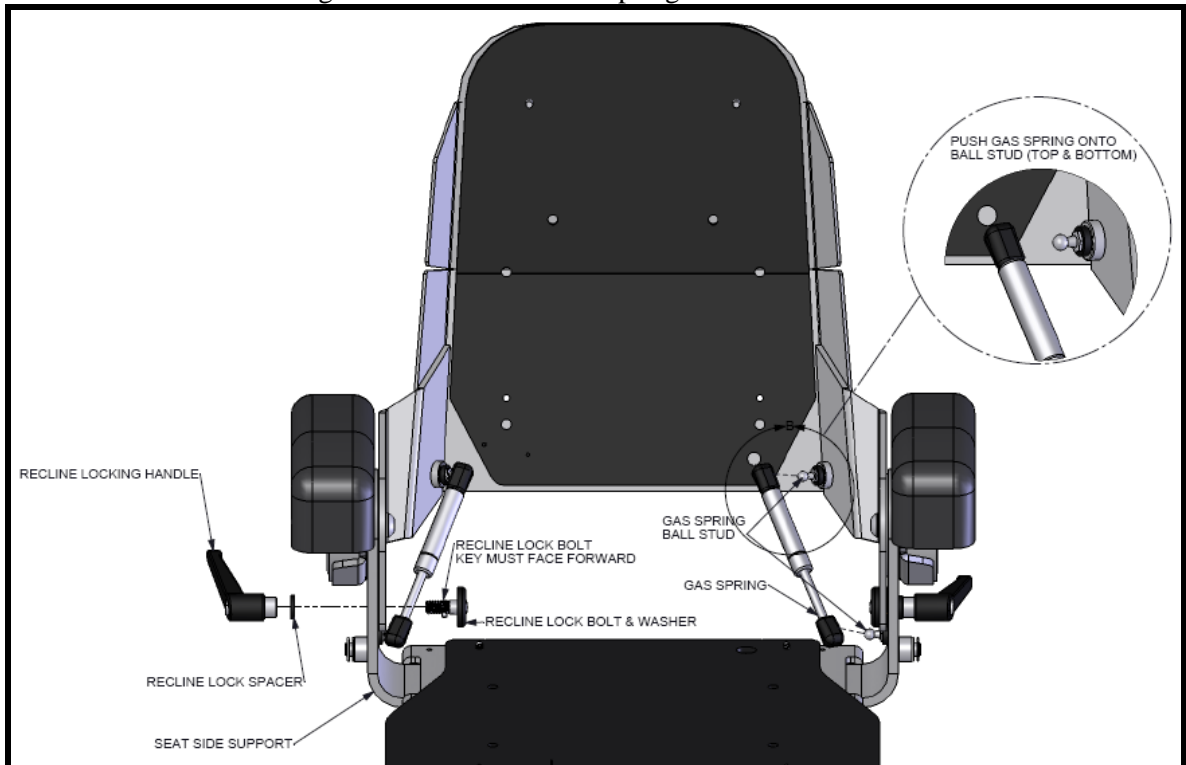
3.5 INSTALLING BACKREST GAS SPRINGS

1. Install the two (2) gas springs by firmly pushing the end clips onto the ball studs located on the seat. Ensure that the shaft end is facing down, as shown below in Figure 3-5

3.6 INSTALLING BACKREST HARDWARE

1. To install the backrest hardware, first lift the backrest to its full upright position.
2. Disassemble the Backrest Locking Handle Assembly from the Seat Hardware Packet leaving the washer on the Recline Lock Bolt, as shown in Figure 3-5.
3. Slide the Recline Lock Bolt and washer through the seat side support and backrest slot. Align the bolt key with the keyway slot on the seat side support.
4. Place the Backrest Lock spacer onto the Recline Lock Bolt and thread the Backrest Locking handle on.

Figure 3-5. Backrest Gas Spring Installation



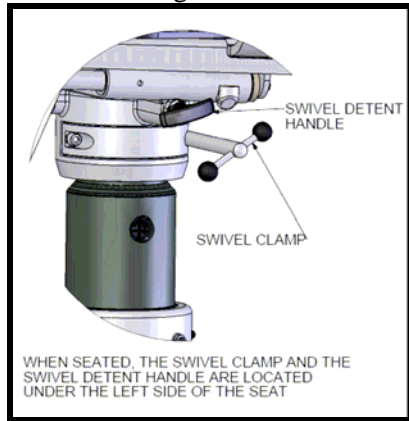
CHAPTER 4

SEAT ADJUSTMENT

4.1 ROTATIONAL ADJUSTMENT

To rotate the seat, loosen the swivel clamp (Figure 4-1), pull the swivel detent handle and rotate the seat to the desired position. Release the swivel detent handle to allow the swivel detent to seat into an indexing hole. **Tighten swivel clamp securely after adjustment is made!**

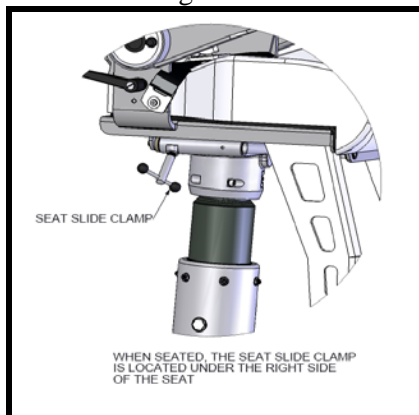
Figure 4-1



4.2 FORE-AFT ADJUSTMENT

To adjust the seat fore-aft, loosen the seat slide clamp handle and position the seat as desired. **Tighten seat slide clamp securely after adjustment is made!**

Figure 4-2

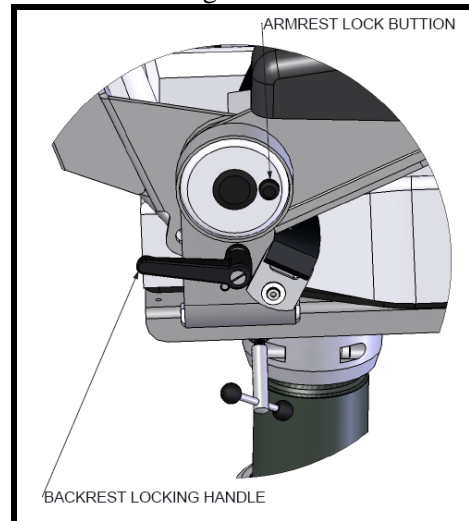


4.3 BACKREST ADJUSTMENT

To recline the backrest of the seat, loosen both backrest locking handles one half turn in opposite directions. Recline the seat to the desired position, and tighten the backrest locking handles securely.

To reposition the locking position of the handles, pull the handle out of the ratchet and rotate to desired position. Release handle.

Figure 4-3.



4.4 ARMREST ADJUSTMENT

To raise the armrest, depress and hold the armrest lock button on the arm hub. Lift the front edge of the arm. When the armrest has reached the raised position, the armrest lock button will reset, securing the armrest in the upright position.

4.5 VERTICAL ADJUSTMENT

Your Version 5 seat with Shock-Mitigating pedestal is set at a fixed height. There is no vertical height adjustment.

CHAPTER 5

SHOCK ABSORBER OPERATION

5.1 GENERAL INFORMATION

Your 500 Series Version 5 Shock-Mitigating Pedestal represents state of the art shock-mitigating technology for the marine environment.

To fully benefit from the shock-mitigating seating, it is important that the seat has been installed properly (in compliance with Chapter 3 of this manual), and the following operational guidelines observed.

- The seat should be positioned between the mid-fore/aft and the fully forward positions.
- The occupant should sit upright with feet positioned on the footrest.
- The seatbelt should be worn at all times while the boat is under way.
- The seatback should be in a comfortable position, and all adjustment handles should be tightened while the vessel is underway.

Leaving the seatback in the fully reclined position while the vessel is underway could cause damage to the seat.

5.2 REBOUND DAMPENING

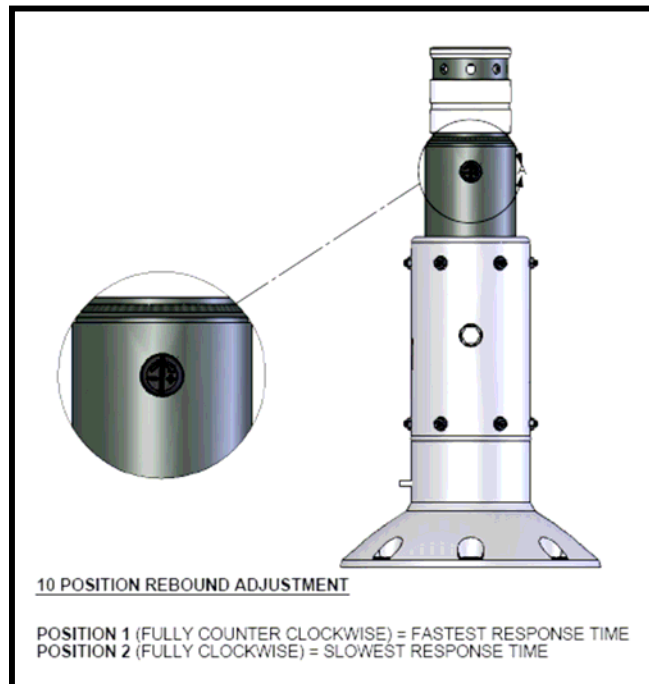
Rebound dampening refers to the speed at which the seat will return to its neutral position after it is compressed.

The rebound dampening level of your seat can be adjusted using the Rebound Adjustment knob on the pedestal.

Rebound dampening on your shock-mitigating pedestal is 10 way adjustable.

- Turning the knob fully counterclockwise to position (1) yields the quickest dampening
- Turning the knob completely clockwise to position (10) will yield the slowest dampening.

Figure 5-1. Rebound Dampening Adjustment



CHAPTER 6

PREVENTATIVE MAINTENANCE

6.1 PEDESTAL MAINTENANCE

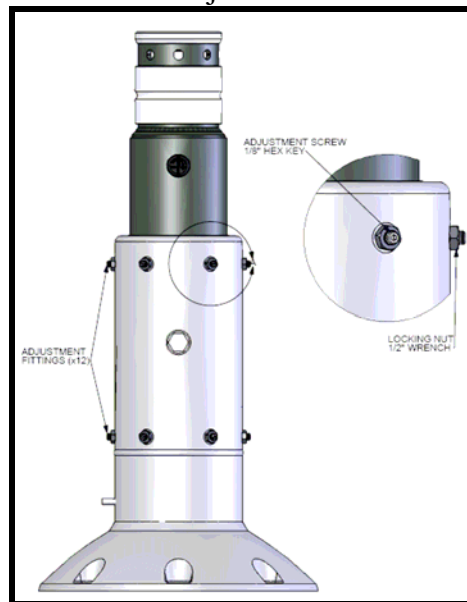
Your Version 5 Shock-Mitigating Pedestal requires very low maintenance if used properly. Maintenance to the pedestal should only be done when a considerable amount of play or movement is present between the inner tube and the pedestal body.

6.1.1 ADJUSTMENT OF THE BUSHINGS

If adjustment is necessary, use the following procedure:

1. Loosen the lock nut on each of the 12 screws using a 1/2" wrench. Use a 1/8" hex key to hold the inner adjustment screw from turning during this process.
2. Turn each adjustment screw clockwise 1/12th of a full turn.
3. Rock the seat port/starboard and fore/aft to check for movement. A small amount of movement is acceptable. **DO NOT OVERTIGHTEN!** Over tightening of the bushing will result in poor shock-mitigation, damage to the pedestal and injury to the passenger.
4. If the pedestal still has an excessive amount of movement, repeat Steps 2&3.
5. If the pedestal seems too tight and/or the shock motion is stiff and sluggish, turn every screw counter-clockwise 1/12th of a full turn and repeat step 3.
6. A properly adjusted pedestal will slide up and down smoothly. A small amount of port/starboard or fore/aft movement will not affect pedestal performance.
7. Using the hex key to hold the adjustment screws in place, tighten the lock nuts. **DO NOT OVERTIGHTEN** the lock nuts. Only tighten the lock nuts enough to prevent the adjustment screws from working loose over time.

Figure 6-1. Pedestal Bushing Adjustment



6.2 GENERAL CARE

Your STIDD Systems seat has been designed and manufactured to minimize maintenance.

To preserve the operational integrity of the seat, please regularly follow the recommended maintenance procedures outlined below.

- **Lubrication**
Periodically pump Suber-Lube brand Teflon grease, or Lubri-plate into grease fittings located on the Fore/Aft Slides below the seat pan (2). Use caution not to overfill.
- **Cushion Replacement**
To replace a cushion, gently pry the colored plastic screw covers from the clear plastic skirts and remove the screws.

CHAPTER 7
TECHNICAL DOCUMENTATION

7.1 PART REPLACEMENT LIST

Table 7-2. Parts Price List

Reference #	Part Number	Description	Cost
1	510-1100-V5-F	VERSION 5 FIXED HEIGHT SHOCK ABSORB PEDESTAL, DA FINISH	\$ 2,615.22
2	520-1002-24	LOW BACK SUB-ASSEMBLY, NARROW, USCG RB-M	\$ 337.54
3	510-1002-24	SEAT PAN SUB-ASSEMBLY, USCG RB-M	\$ 916.89
4	560-1054-24	X2 FOOTREST SUB-ASSEMBLY, USCG RB-M	\$ 649.11
5	510-1-094-RLN	SUB-ASSEMBLY, ARM, NARROW REINFORCED, LEFT	\$ 331.76
6	510-1-094-RRN	SUB-ASSEMBLY, ARM, NARROW REINFORCED, RIGHT	\$ 331.76
7	510-010-022	CRES LAP BELT ASSEMBLY, 52"	\$ 60.75
8	510-8-035	STANDARD HANDLE ASSY. KIT	\$ 186.96
9	500-010-014	BACKREST LOCK HANDLE ASSEMBLY	\$ 92.82
10	500-010-021	HARDWARE KIT	\$ 35.13
11	U/500N-200-CG	UPHOLSTERY SET, 500 NARROW LOWBACK, USCG	\$ 889.18
12	510-7-200-N-CG	UPHOLSTERY, SEAT, USCG STAMOID	\$ 392.72
13	520-7-010-N-CG	UPHOLSTERY, LOWBACK, NARROW USCG STAMOID	\$ 336.80
14	510-7-194-N-CG	UPHOLSTERY, ARM, USCG STAMOID	\$ 80.19

Figure 7-2. General Seat Dimensions

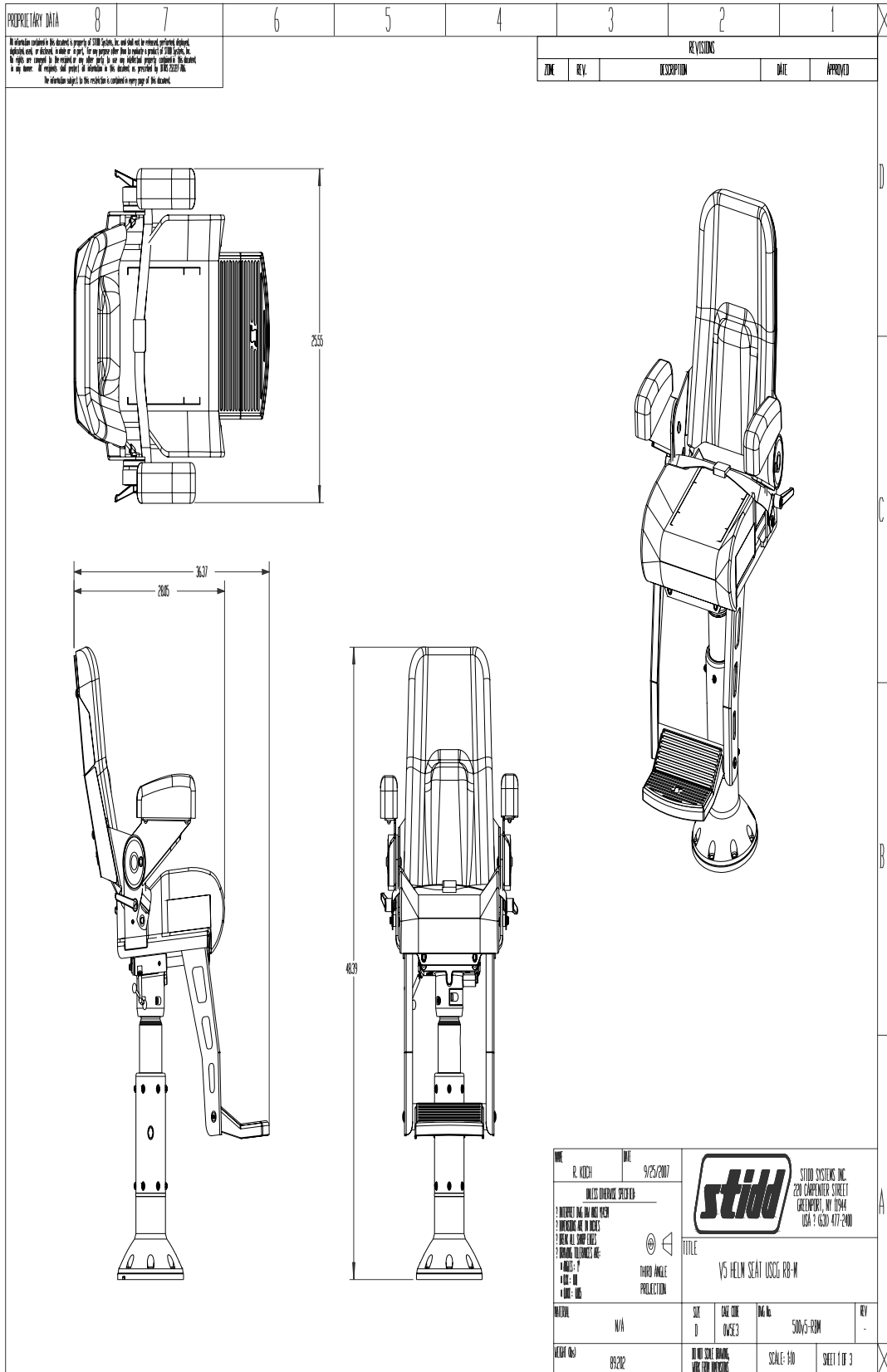


Figure 7-3. Exploded Assembly

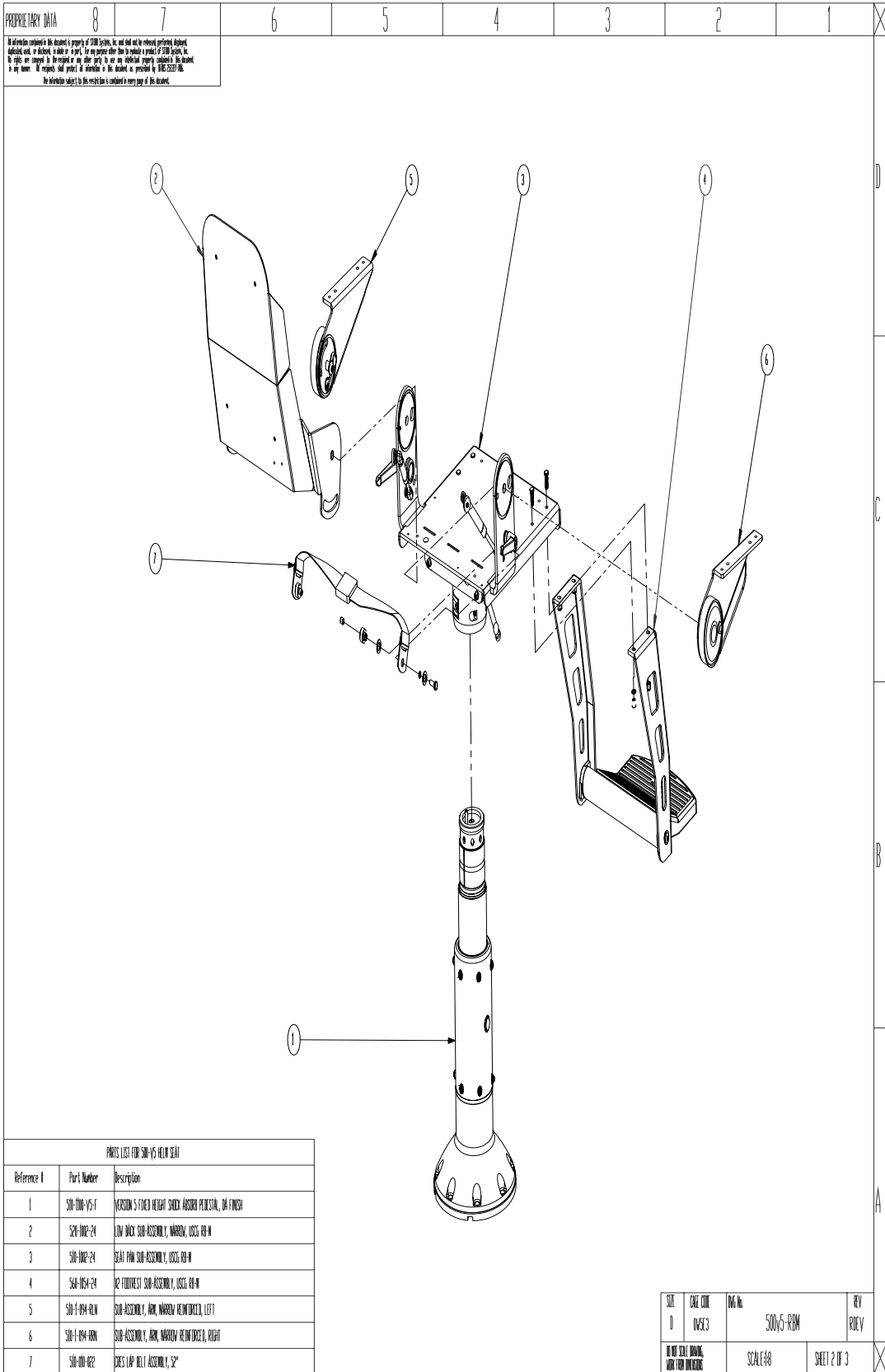
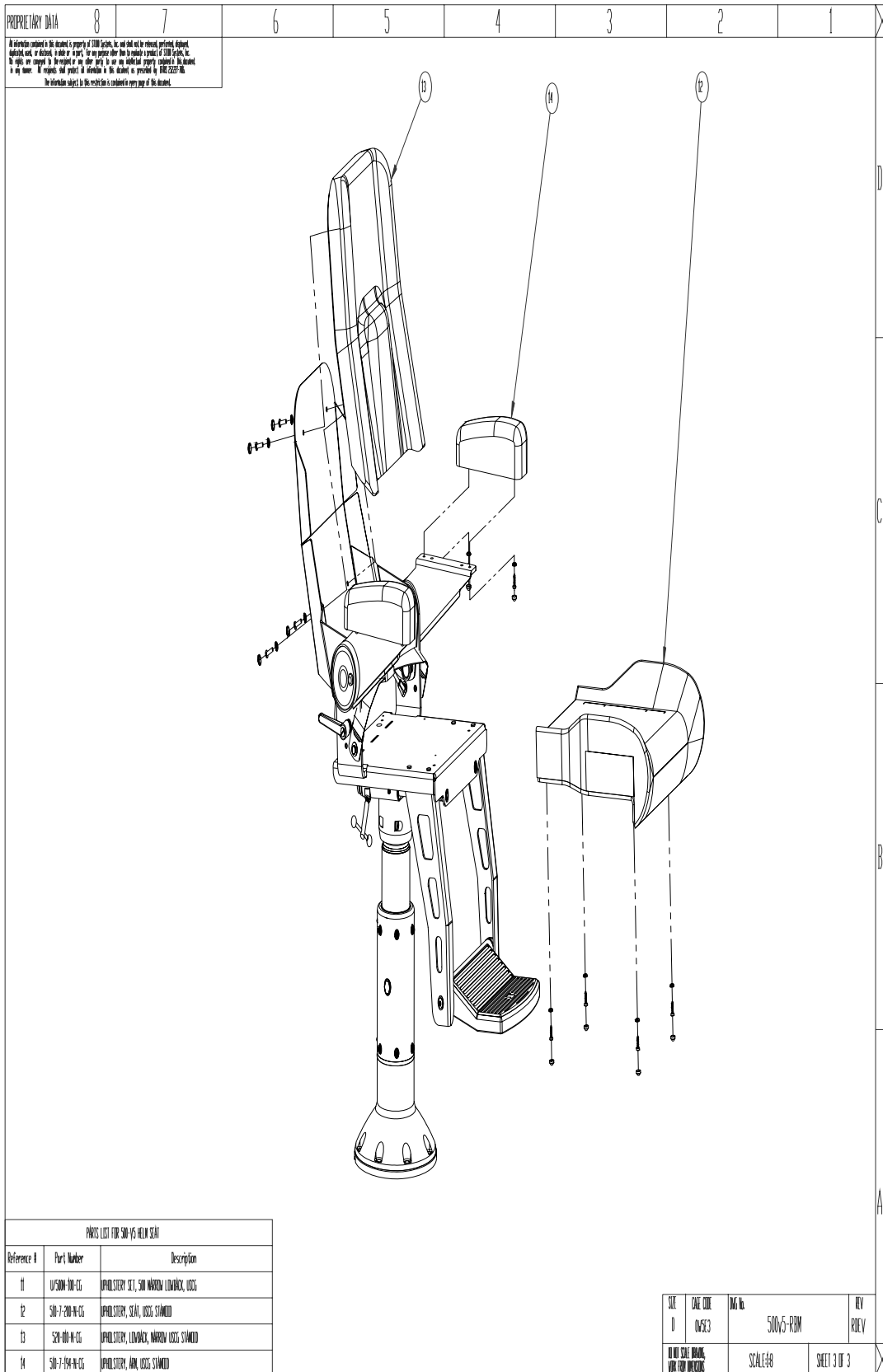


Figure 7-4. Exploded Upholstery



CHAPTER 8

WARRANTY INFORMATION

8.1 LIMITED WARRANTY

STIDD Systems, Inc. (SSI) warrants that its products (Products) will be free from defects in material and workmanship under normal and proper usage for a period of twelve (12) months from the date of shipment. SSI's obligation hereunder is limited to replacing or repairing, at SSI's option, Products or parts thereof determined by SSI to be defective, returned freight prepaid to SSI's place of business. All dismantling and assembly at Buyer's place of business and necessary packaging and transportation both ways shall be at Buyer's sole cost and expense. Replacement parts shall be shipped freight collect subject to the same terms, conditions and charges (except for the purchase price) as the original shipment. SSI shall be under no obligation to repair any Product which has been subjected to improper operation, maintenance or storage, accident, alteration, abuse or failure to follow normal operating or maintenance procedures as set forth in the "Installation, Operation & Maintenance Instructions" accompanying the Products. Alteration or repair by any other than authorized SSI personnel shall invalidate this Limited Warranty. SSI does not authorize any person to assume for it any other obligation or liability not specified in this Limited Warranty. Equipment, components, accessories and any other items not of SSI's manufacture are warranted by SSI to the Buyer only to the extent the same are warranted to SSI and enforceable by SSI against the supplier and/or manufacturer thereof and are subject to all terms and conditions of said warranties to SSI. In the event SSI provides service under the assumption that it is warranty service, and during the course of providing such service, SSI determines that the alleged defects are not covered by this Limited Warranty, Buyer agrees to pay for such service, including parts, at SSI's standard rates and prices then in effect. SSI shall in no event be liable for indirect, consequential or special damages, including, without limitation, any damages for lost profits, lost time or personal injuries, including such damages or injuries which may occur in the event of a breach of the foregoing limited warranty.

THIS WARRANTY IS IN LIEU OF AND EXCLUDES ALL OTHER WARRANTIES, EXPRESS OR IMPLIED, INCLUDING THE WARRANTY OF MERCHANTABILITY OR FITNESS FOR A PARTICULAR PURPOSE.

U.S. and Foreign Patents and Trademarks Pending and Issued.



STIDD SYSTEMS, Inc.

220 Carpenter Street · P.O. Box 87 · Greenport, NY 11944 · Tel: 631-477-2400 · Fax: 631-277-1095

Made in U.S.A.